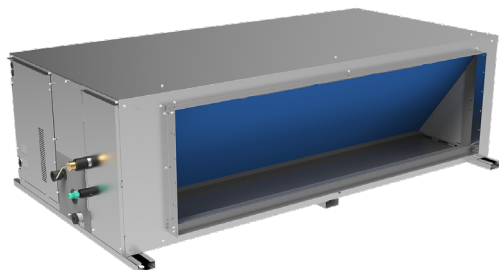


High Pressure Vertical Air Discharge

KPDUF-280V DN6

PRODUCT SHEET



KCT-03 SR
Recommended controller



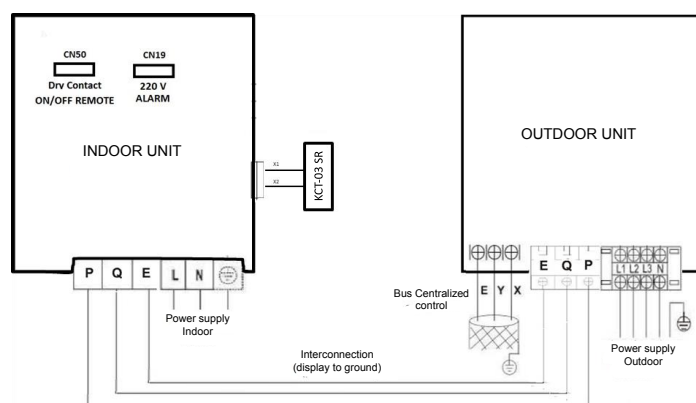
Product certified by:



FEATURES

Model	KPDUF-280V DN6
Cooling capacity	28 kW
Cooling power input	9.900 W
Heating capacity	28 kW
Heating power input	7.500 W
Airflow (indoor)	2.820/3.133/3.447/3.760/4.073/4.387/4.700 m ³ /h
Sound pressure (indoor)	42/43/44/46/48/50/51 dB(A)
Airflow (outdoor)	12.600 m ³ /h
Sound pressure (outdoor)	58 dB(A)
Power supply (indoor)	220-240 V / 1 / 50 Hz
Power supply (outdoor)	380-415 V / 3 / 50 Hz
Power wiring (indoor)	(2+T)x4 mm ²
Power wiring (outdoor)	(4+T)x6 mm ²
Max. input	18,80 A
Com. bus shielded	3x0,75 mm ²

WIRING DIAGRAM



NOTES:

(1) Data and specifications not applicable for calculation or execution of installations. For consultation and/or verification, official technical documentation is available at www.kaysun.es or VRF Selecta selection software.

(2) The data and specifications in this data sheet may vary without prior notice.

(3) The images in this sheet are for guidance only and may differ from the final machine.

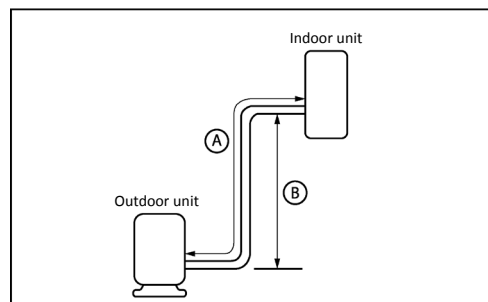
(4) Cooling capacity conditions: Indoor temperature 27°C DB/19°C WB; Outdoor temperature 35°C DB; Equivalent pipe length 7.5 m with zero slope; Data calculated with duct type indoor unit. Heating capacity conditions: Indoor temperature 20°C DB; Outdoor temperature 7°C DB/6°C WB; Equivalent pipe length 7.5 m with zero head; Data calculated with the Duct type indoor unit.

(5) The sound pressure level is measured at a position 1 m in front of the unit and 1.3 m above the floor in a semi-anechoic chamber.

COOLING CONNECTION

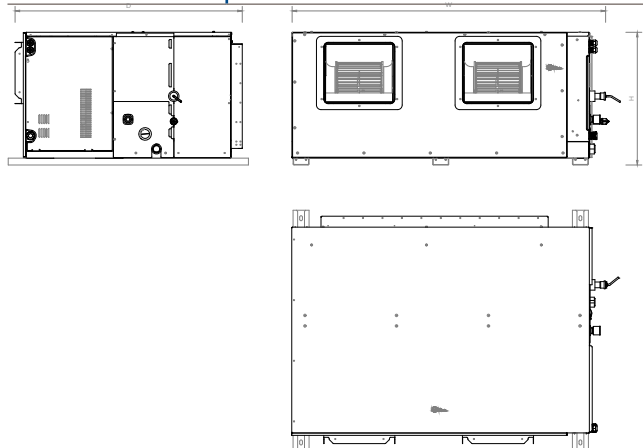
Model	
Refrigerating pipes ⁽¹⁾	Ø1/2" / Ø7/8"
Refrigerant charge	7 kg
Indoor drain pipe	Ø32
Max. pipe length (A)	175 m
Max. level difference (B)	90 m

KPDUF-280V DN6



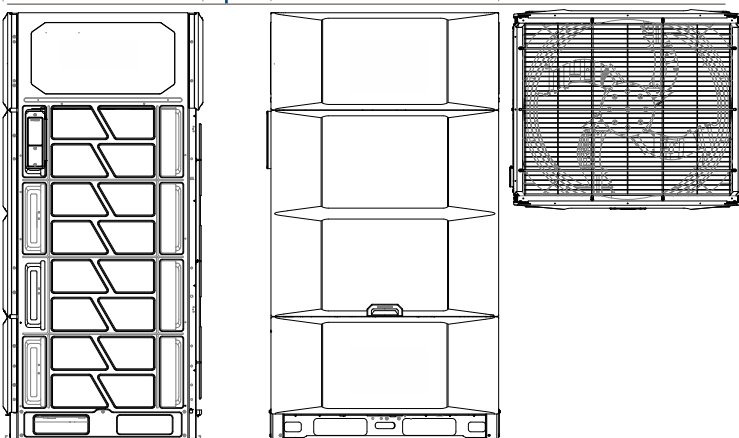
DIMENSIONS & WEIGHT INDOOR

Model	KPDUF-280 DN5.0
Width	1.300 mm
Height	580 mm
Depth	900 mm
Weight	125 kg

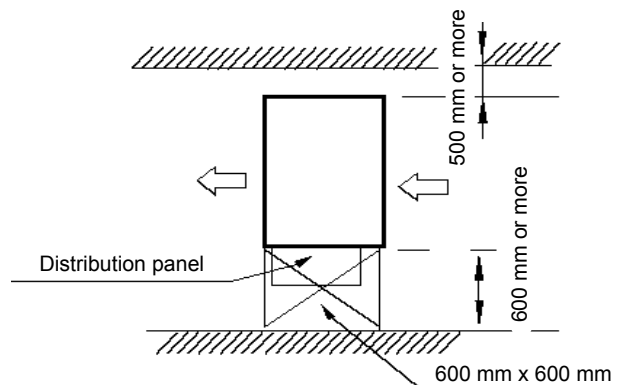
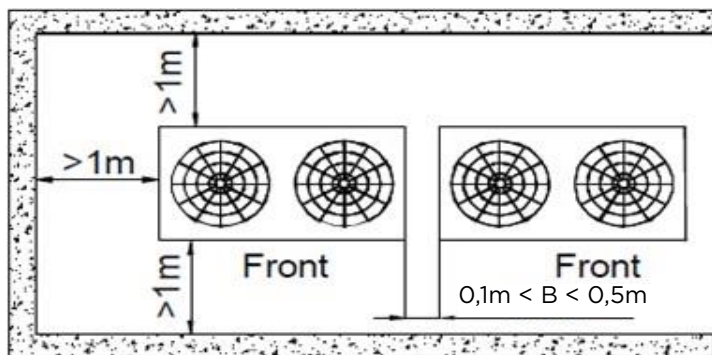


DIMENSIONS & WEIGHT OUTDOOR

Model	K2UF-280 DN6
Width	940 mm
Height	1.760 mm
Depth	825 mm
Weight	193 kg

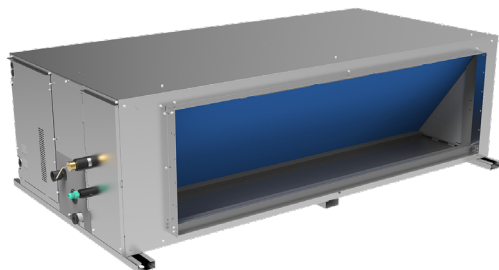


INSTALLATION



High Pressure Top Air Discharge KPDUF-450V DN6

PRODUCT SHEET



KCT-03 SR
Recommended controller



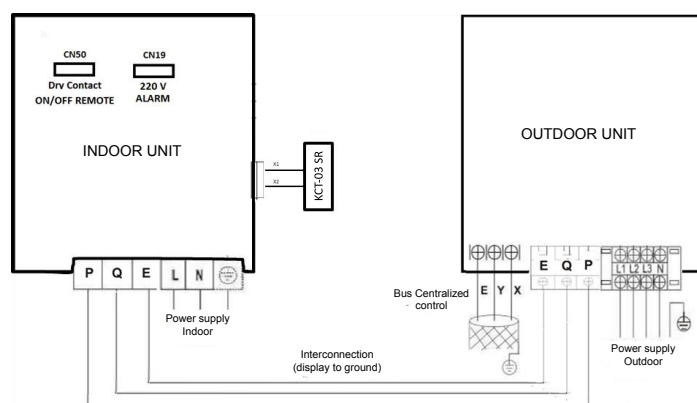
Product certified by:



FEATURES

Model	KPDUF-450V DN6
Cooling capacity	45 kW
Cooling power input	22.000 W
Heating capacity	50 kW
Heating power input	14.000 kW
Airflow (indoor)	4.500/5.000/5.500/6.000/6.500/7.000/7.500 m³/h
Sound pressure (indoor)	48/49/50/52/54/56/58 dB(A)
Airflow (outdoor)	13.000 m³/h
Sound pressure (outdoor)	65 dB(A)
Power supply (indoor)	220-240 V / 1 / 50 Hz
Power supply (outdoor)	380-415 V / 3 / 50 Hz
Power wiring (indoor)	(2+T)x4 mm²
Power wiring (outdoor)	(4+T)x10 mm²
Max. input	40 A
Com. bus shielded	3x0,75 mm²

WIRING DIAGRAM



NOTES:

(1) Data and specifications not applicable for calculation or execution of installations. For consultation and/or verification, official technical documentation is available at www.kaysun.es or VRF Selecta selection software.

(2) The data and specifications in this data sheet may vary without prior notice.

(3) The images in this sheet are for guidance only and may differ from the final machine.

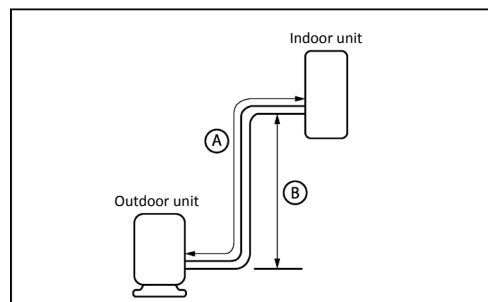
(4) Cooling capacity conditions: Indoor temperature 27°C DB/19°C WB; Outdoor temperature 35°C DB; Equivalent pipe length 7.5 m with zero slope; Data calculated with duct type indoor unit. Heating capacity conditions: Indoor temperature 20°C DB; Outdoor temperature 7°C DB/6°C WB; Equivalent pipe length 7.5 m with zero head; Data calculated with the Duct type indoor unit.

(5) The sound pressure level is measured at a position 1 m in front of the unit and 1.3 m above the floor in a semi-anechoic chamber.

COOLING CONNECTION

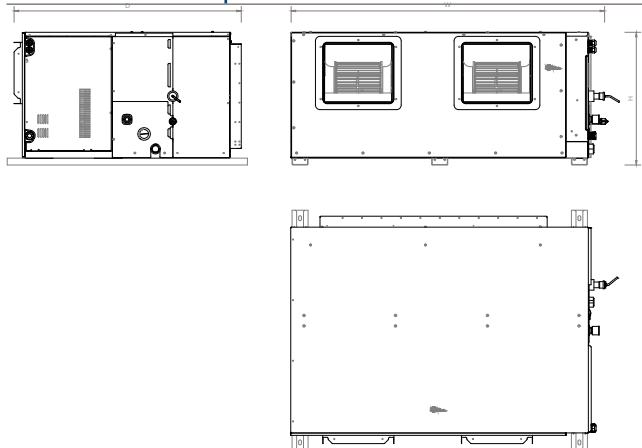
Model	
Refrigerating pipes ⁽¹⁾	Ø1/2" / Ø1 1/8"
Refrigerant charge	13 kg
Indoor drain pipe	Ø32
Max. pipe length (A)	175 m
Max. level difference (B)	90 m

KPDUF-450V DN6



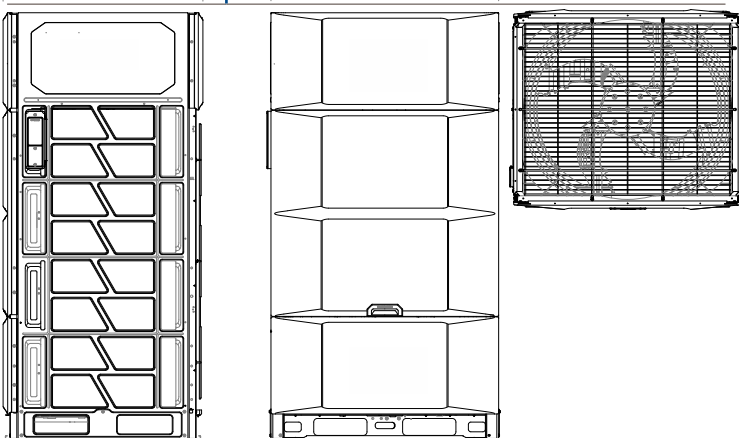
DIMENSIONS & WEIGHT INDOOR

Model	KPDUF-450 DN5.0
Width	2.010 mm
Height	680 mm
Depth	905 mm
Weight	210 kg

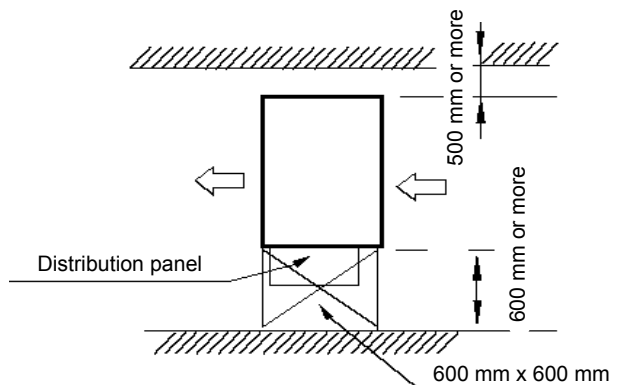
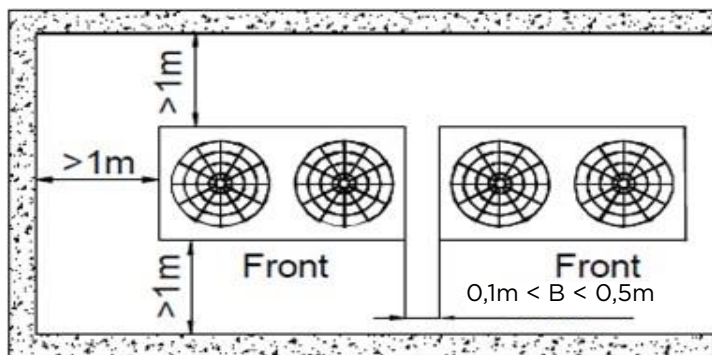


DIMENSIONS & WEIGHT OUTDOOR

Model	K2UF-450 DN6
Width	1.340 mm
Height	1.635 mm
Depth	850 mm
Weight	277 kg



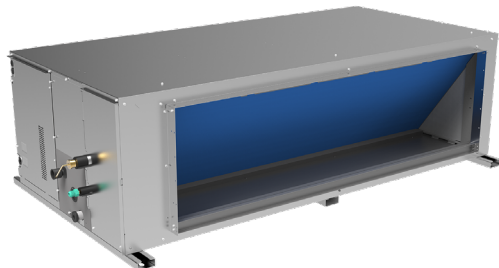
INSTALLATION



High Pressure Top Air Discharge

KPDUF-560V DN6

PRODUCT SHEET



KCT-03 SR
Recommended controller



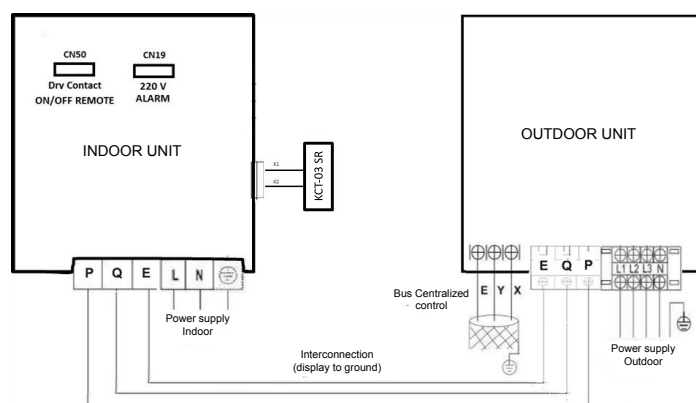
Product certified by:



FEATURES

Model	KPDUF-560V DN6
Cooling capacity	56 kW
Cooling power input	26.000 W
Heating capacity	56 kW
Heating power input	17.200 kW
Airflow (indoor)	5.040/5.600/6.160/6.720/7.280/7.840/8.400 m ³ /h
Sound pressure (indoor)	49/51/53/54/56/58/59 dB(A)
Airflow (outdoor)	22.000 m ³ /h
Sound pressure (outdoor)	66 dB(A)
Power supply (indoor)	220-240 V / 1 / 50 Hz
Power supply (outdoor)	380-415 V / 3 / 50 Hz
Power wiring (indoor)	(2+T)x4 mm ²
Power wiring (outdoor)	(4+T)x16 mm ²
Max. input	50 A
Com. bus shielded	3x0,75 mm ²

WIRING DIAGRAM



NOTES:

(1) Data and specifications not applicable for calculation or execution of installations. For consultation and/or verification, official technical documentation is available at www.kaysun.es or VRF Selecta selection software.

(2) The data and specifications in this data sheet may vary without prior notice.

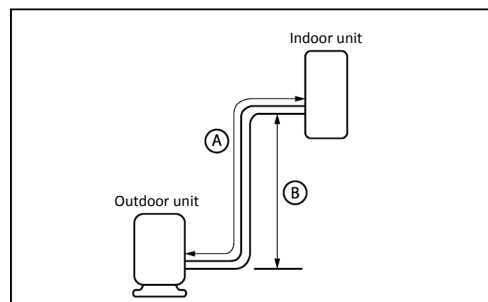
(3) The images in this sheet are for guidance only and may differ from the final machine.

(4) Cooling capacity conditions: Indoor temperature 27°C DB/19°C WB; Outdoor temperature 35°C DB; Equivalent pipe length 7.5 m with zero slope; Data calculated with duct type indoor unit. Heating capacity conditions: Indoor temperature 20°C DB; Outdoor temperature 7°C DB/6°C WB; Equivalent pipe length 7.5 m with zero head; Data calculated with the Duct type indoor unit.

(5) The sound pressure level is measured at a position 1 m in front of the unit and 1.3 m above the floor in a semi-anechoic chamber.

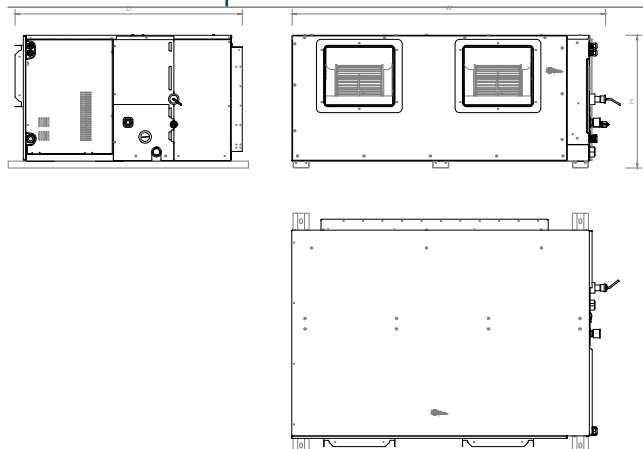
COOLING CONNECTION

Model	KPDUF-560V DN6
Refrigerating pipes ⁽¹⁾	Ø5/8" / Ø1 1/8"
Refrigerant charge	17 kg
Indoor drain pipe	Ø32
Max. pipe length (A)	175 m
Max. level difference (B)	90 m



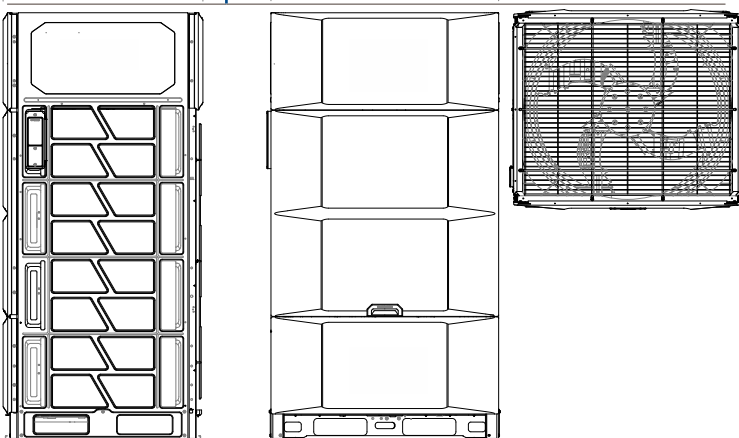
DIMENSIONS & WEIGHT INDOOR

Model	KPDUF-560 DN5.0
Width	2.010 mm
Height	680 mm
Depth	905 mm
Weight	218 kg



DIMENSIONS & WEIGHT OUTDOOR

Model	K2UF-560 DN6
Width	1.340 mm
Height	1.635 mm
Depth	825 mm
Weight	348 kg



INSTALLATION

