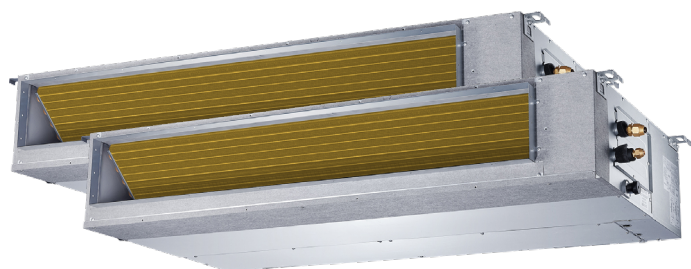


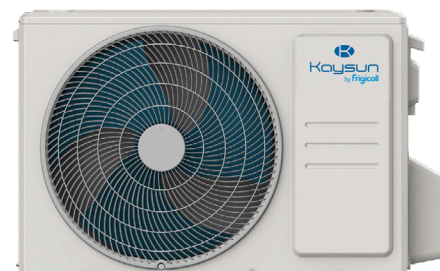
Ducts

Twins Axial Current Loop

PRODUCT SHEET



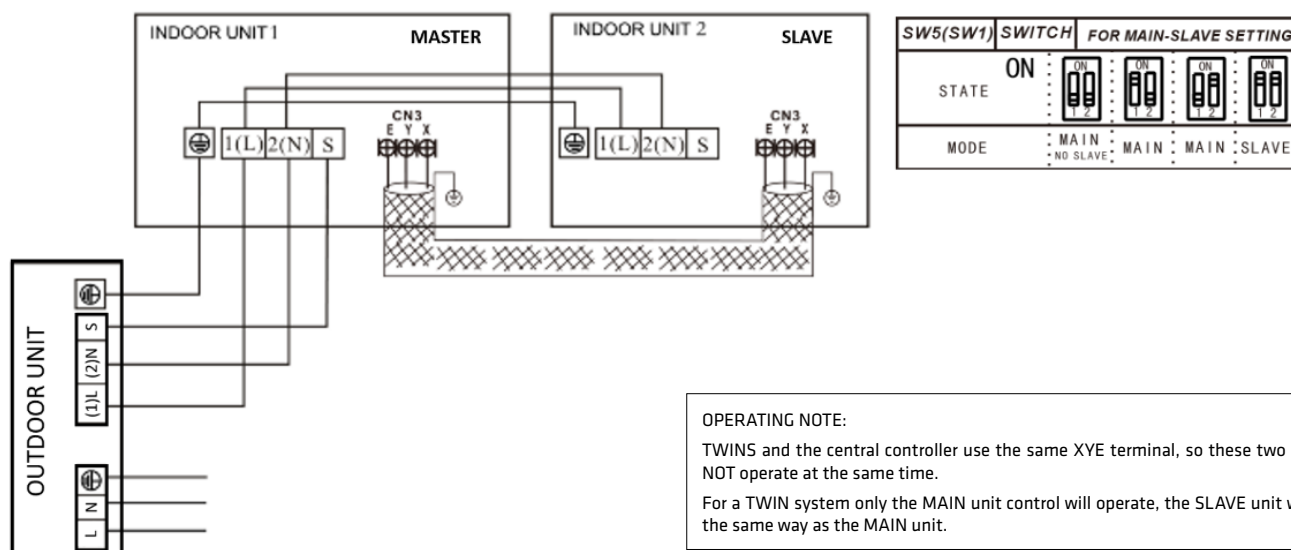
KC-03.1 SPS
Recommended
controller



FEATURES

Indoor model / Outdoor model	2x KPD-35 DR14 / KUE-52 DVR13
Cooling capacity (indoor)	2x 3,52 kW
Heating capacity (indoor)	2x 3,81 kW
Airflow (indoor)	350/500/660 m³/h
Sound pressure (indoor)	29,80/33,50/36 dB(A)
Max. available pressure	60 Pa
Airflow (outdoor)	3.500 m³/h
Sound pressure (outdoor)	60 dB(A)
Power supply	220-240 V / 1 / 50 Hz
Circuit breaker / Fuse	25 / 20 A
Power wiring (outdoor)	(2+T)x2,50 mm²
Interconnection wiring (outdoor - indoor)	(3+T)x1 mm²
Controller communication wiring	2x0,5 mm² (≤20 m) / 2x0,75-1,25 mm² (≤50 m)
XYE communication BUS (shielded)	3x0,75 mm²

WIRING DIAGRAM



OPERATING NOTE:

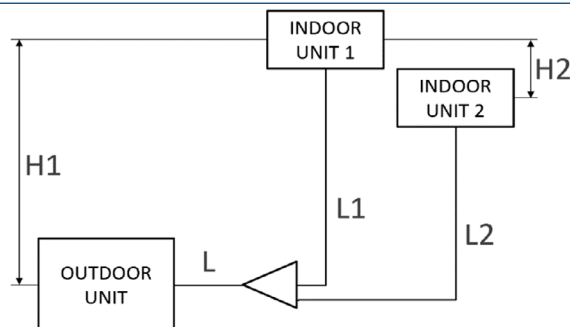
TWINS and the central controller use the same XYE terminal, so these two functions will NOT operate at the same time.

For a TWIN system only the MAIN unit control will operate, the SLAVE unit will operate in the same way as the MAIN unit.

NOTES:
(1) The data and specifications present in this sheet may vary without notice.
(2) The images on this sheet are indicative and may be different from the final machine.

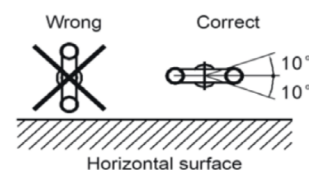
COOLING CONNECTION

Model	2x KPD-35 DR14 / KUE-52 DVR13	
Refrigerating pipes (L)	Ø3/8" / Ø5/8"	
Refrigerating pipes (L1 & L2)	Ø1/4" / Ø3/8"	
Refrigerant charge	1,50 kg	
Indoor drain pipe	Ø25 mm	
Max. pipe length	50 m	
Max. level difference between outdoor & indoor unit (H1)	20 m	
Max. level difference between indoor units (H2)	0,50 m	
Max. pipe length (L1 & L2)	15 m	
Difference between pipes (L1-L2)	10 m	



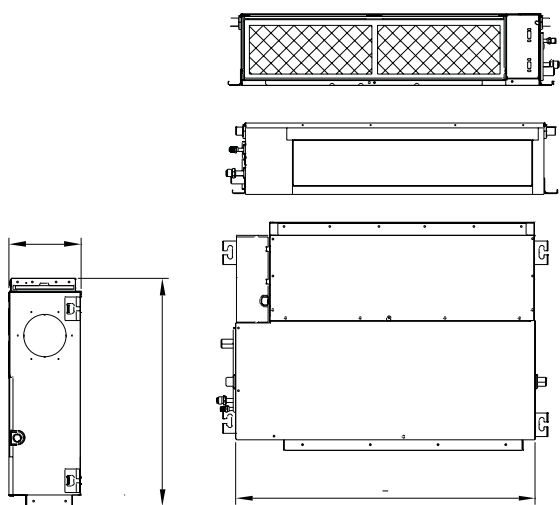
Distributor installation:

A direction view



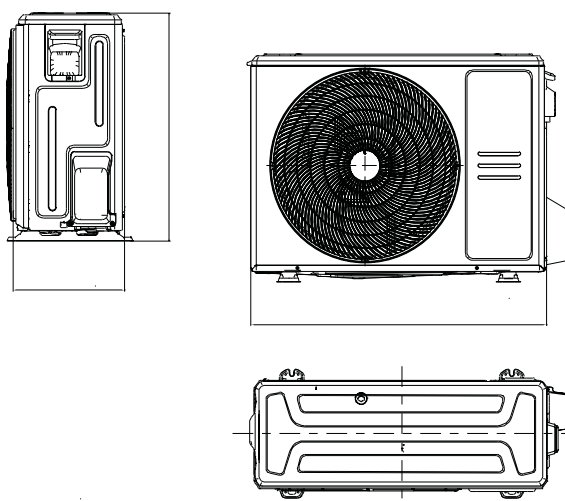
DIMENSIONS & WEIGHT INDOOR

Model	KPD-35 DR14
Width	700 mm
Height	200 mm
Depth	506 mm
Weight	17,80 kg



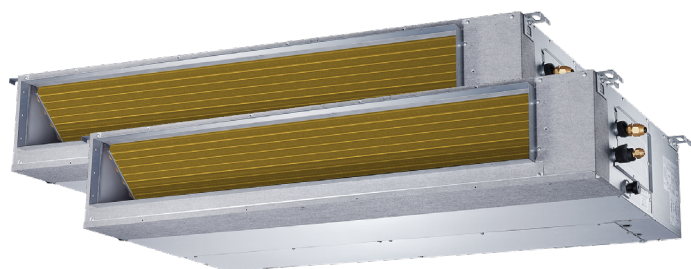
DIMENSIONS & WEIGHT OUTDOOR

Model	KUE-52 DVR13
Width	890 mm
Height	673 mm
Depth	342 mm
Weight	43,90 kg

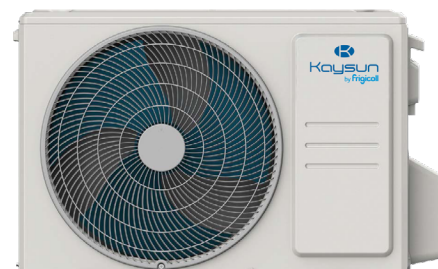


Ducts

Twins Axial Current Loop



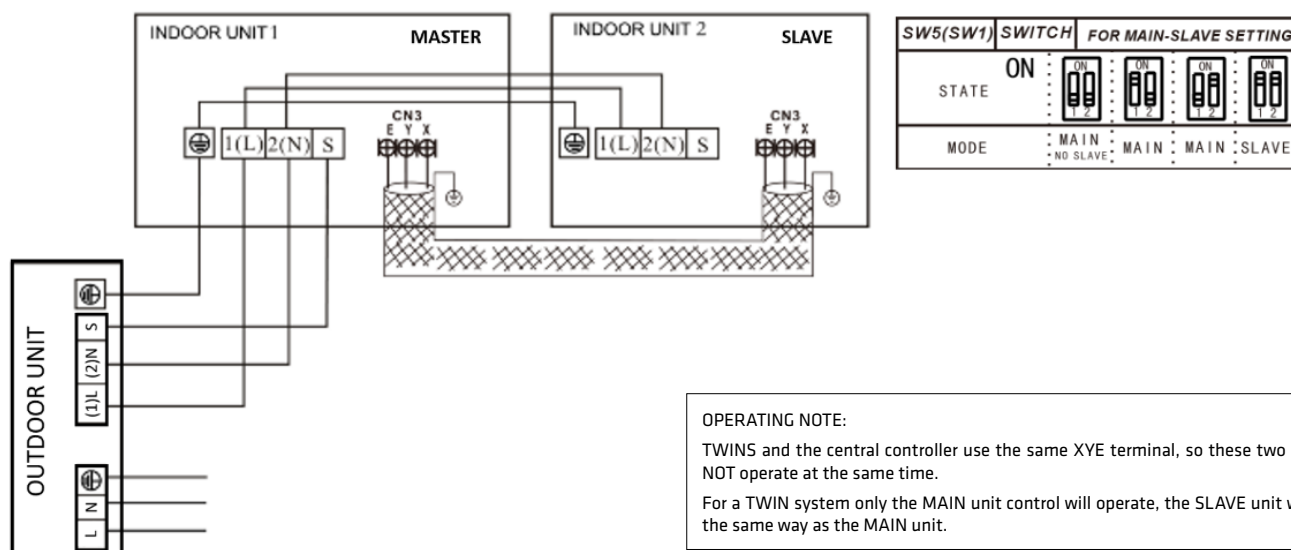
KC-03.1 SPS
Recommended
controller



FEATURES

Indoor model / Outdoor model	2x KPD-52 DR14 / KUE-105 DVR13
Cooling capacity (indoor)	2x 5,28 kW
Heating capacity (indoor)	2x 5,57 kW
Airflow (indoor)	420/670/870 m ³ /h
Sound pressure (indoor)	26/29,80/35 dB(A)
Max. available pressure	100 Pa
Airflow (outdoor)	4.000 m ³ /h
Sound pressure (outdoor)	63 dB(A)
Power supply	220-240 V / 1 / 50 Hz
Circuit breaker / Fuse	50 / 40 A
Power wiring (outdoor)	(2+T)x4 mm ²
Interconnection wiring (outdoor - indoor)	(3+T)x1 mm ²
Controller communication wiring	2x0,5 mm ² (≤20 m) / 2x0,75-1,25 mm ² (≤50 m)
XYE communication BUS (shielded)	3x0,75 mm ²

WIRING DIAGRAM



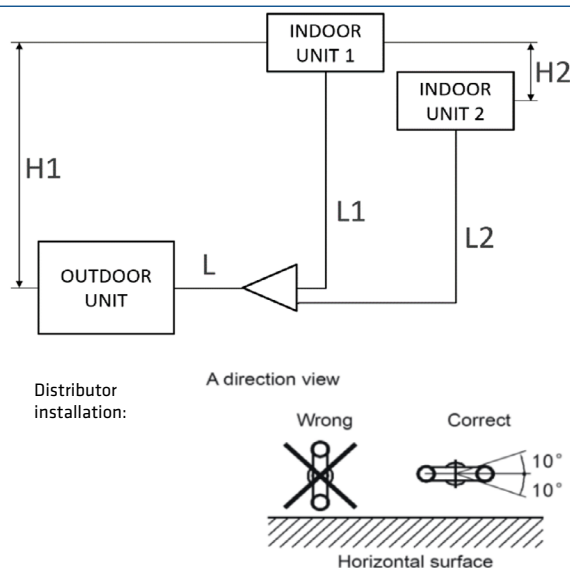
OPERATING NOTE:

TWINS and the central controller use the same XYE terminal, so these two functions will NOT operate at the same time.

For a TWIN system only the MAIN unit control will operate, the SLAVE unit will operate in the same way as the MAIN unit.

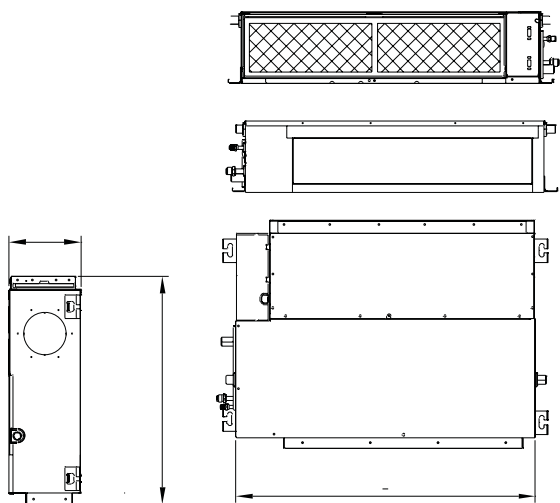
COOLING CONNECTION

Model	2x KPD-52 DR14 / KUE-105 DVR13	
Refrigerating pipes (L)	Ø3/8" / Ø5/8"	
Refrigerating pipes (L1 & L2)	Ø1/4" / Ø1/2"	
Refrigerant charge	2,40 kg	
Indoor drain pipe	Ø25 mm	
Max. pipe length	65 m	
Max. level difference between outdoor & indoor unit (H1)	20 m	
Max. level difference between indoor units (H2)	0,50 m	
Max. pipe length (L1 & L2)	15 m	
Difference between pipes (L1-L2)	10 m	



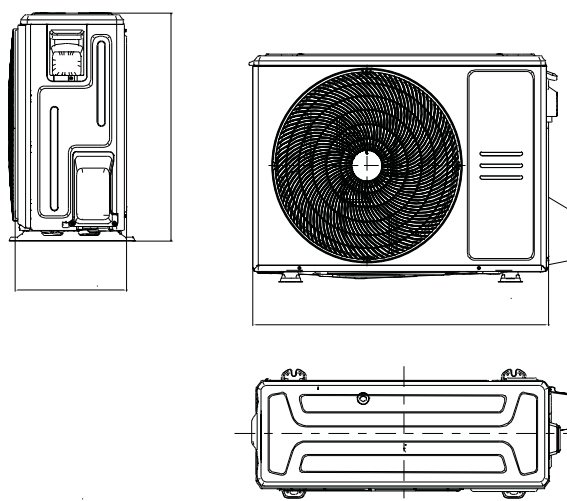
DIMENSIONS & WEIGHT INDOOR

Model	KPD-52 DR14
Width	880 mm
Height	210 mm
Depth	674 mm
Weight	24,40 kg



DIMENSIONS & WEIGHT OUTDOOR

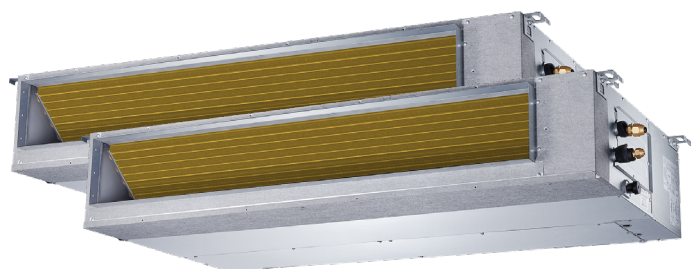
Model	KUE-105 DVR13
Width	946 mm
Height	810 mm
Depth	410 mm
Weight	66,90 kg



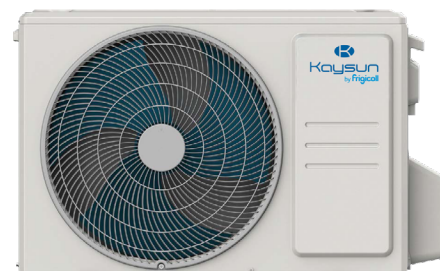
Ducts

Twins Axial Current Loop

PRODUCT SHEET



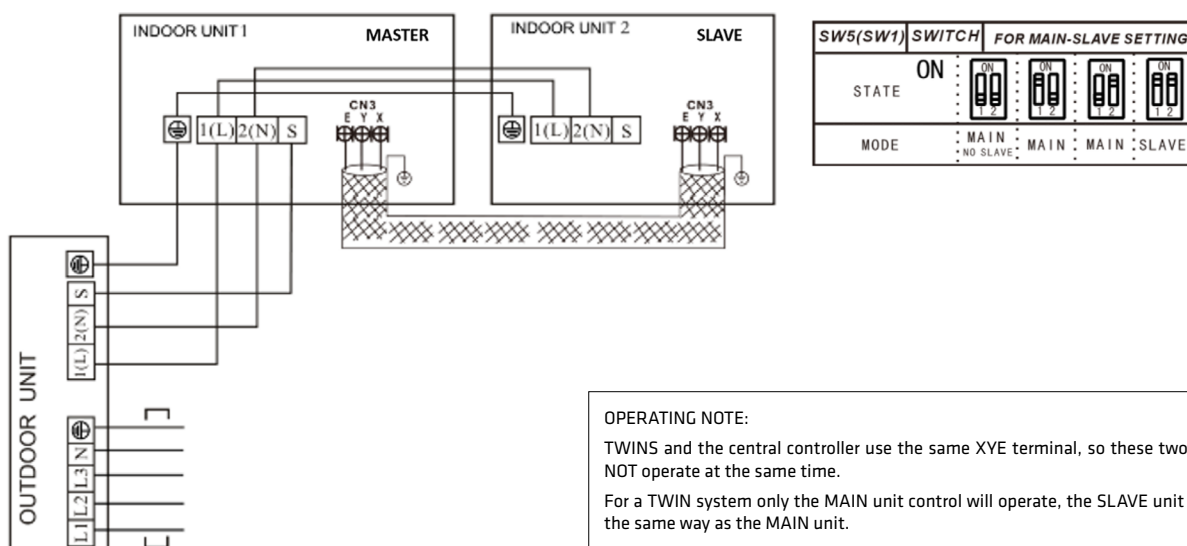
KC-03.1 SPS
Recommended
controller



FEATURES

Indoor model / Outdoor model	2x KPD-52 DR14 / KUE-105 DTR13
Cooling capacity (indoor)	2x 5,28 kW
Heating capacity (indoor)	2x 5,57 kW
Airflow (indoor)	420/670/870 m³/h
Sound pressure (indoor)	26/29,80/35 dB(A)
Max. available pressure	100 Pa
Airflow (outdoor)	4.000 m³/h
Sound pressure (outdoor)	63 dB(A)
Power supply	380-415 V / 3 / 50 Hz
Circuit breaker / Fuse	25 / 20 A
Power wiring (outdoor)	(4+T)x2,50 mm²
Interconnection wiring (outdoor - indoor)	(3+T)x1 mm²
Controller communication wiring	2x0,5 mm² (≤20 m) / 2x0,75-1,25 mm² (≤50 m)
XYE communication BUS (shielded)	3x0,75 mm²

WIRING DIAGRAM



NOTES:
(1) The data and specifications present in this sheet may vary without notice.
(2) The images on this sheet are indicative and may be different from the final machine.

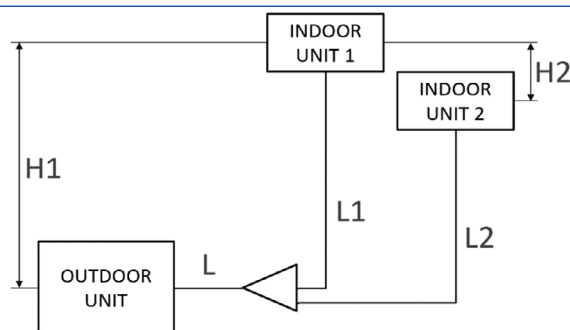
OPERATING NOTE:

TWINS and the central controller use the same XYE terminal, so these two functions will NOT operate at the same time.

For a TWIN system only the MAIN unit control will operate, the SLAVE unit will operate in the same way as the MAIN unit.

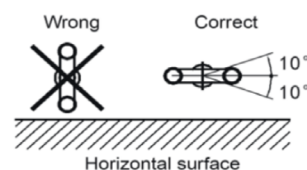
COOLING CONNECTION

Model	2x KPD-52 DR14 / KUE-105 DTR13	
Refrigerating pipes (L)	Ø3/8" / Ø5/8"	
Refrigerating pipes (L1 & L2)	Ø1/4" / Ø1/2"	
Refrigerant charge	2,40 kg	
Indoor drain pipe	Ø25 mm	
Max. pipe length	65 m	
Max. level difference between outdoor & indoor unit (H1)	20 m	
Max. level difference between indoor units (H2)	0,50 m	
Max. pipe length (L1 & L2)	15 m	
Difference between pipes (L1-L2)	10 m	



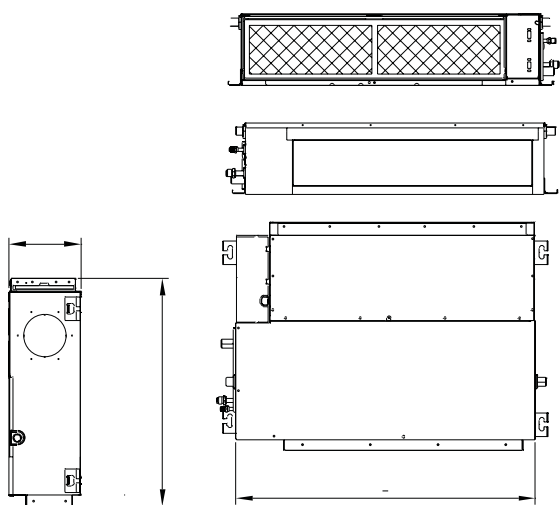
Distributor installation:

A direction view



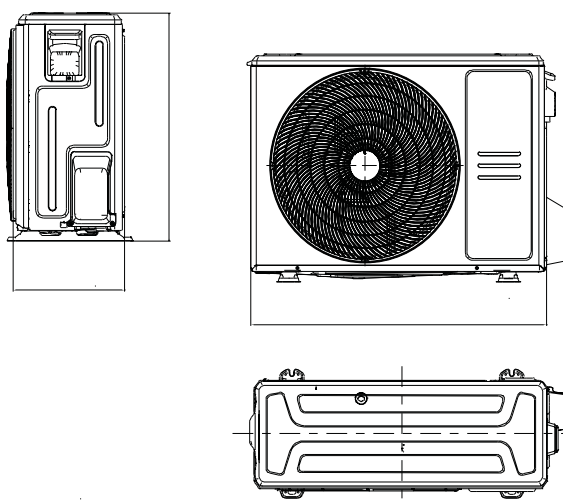
DIMENSIONS & WEIGHT INDOOR

Model	KPD-52 DR14
Width	880 mm
Height	210 mm
Depth	674 mm
Weight	24,40 kg



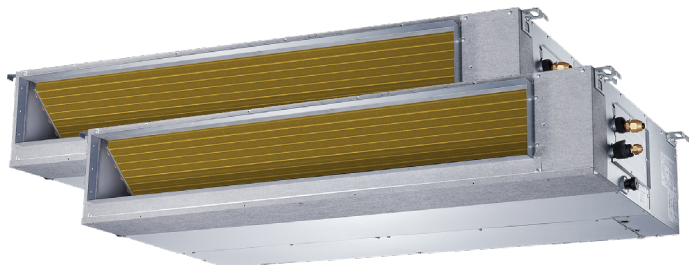
DIMENSIONS & WEIGHT OUTDOOR

Model	KUE-105 DTR13
Width	946 mm
Height	810 mm
Depth	410 mm
Weight	80,50 kg



Ducts

Twins Axial Current Loop



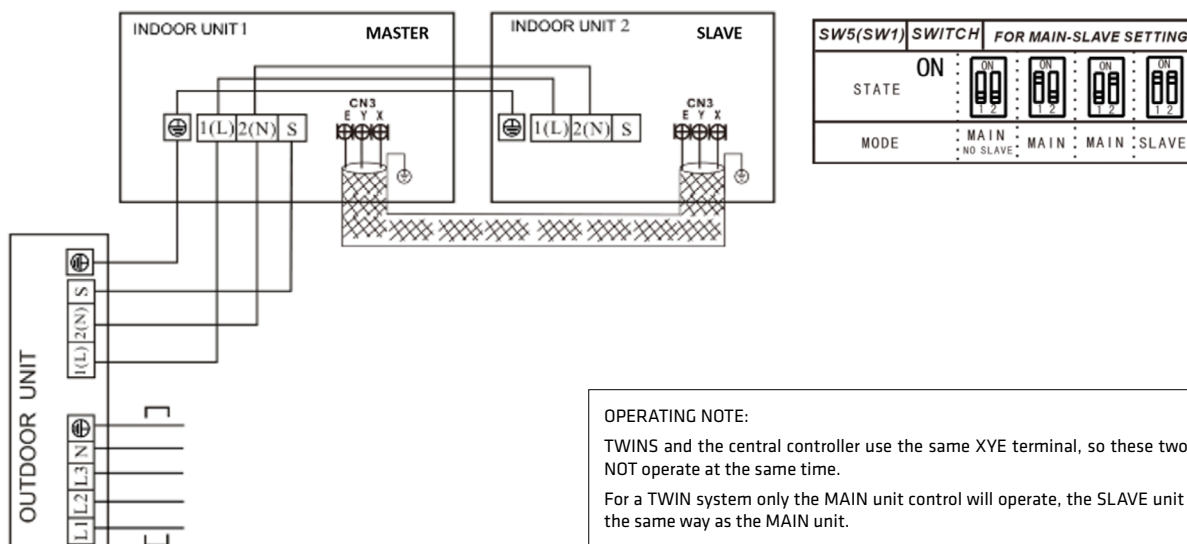
KC-03.1 SPS
Recommended
controller



FEATURES

Indoor model / Outdoor model	2x KPD-71 DR14 / KUE-140 DTR13
Cooling capacity (indoor)	2x 7,03 kW
Heating capacity (indoor)	2x 7,62 kW
Airflow (indoor)	610/930/1.200 m³/h
Sound pressure (indoor)	25,50/29,10/32,80 dB(A)
Max. available pressure	160 Pa
Airflow (outdoor)	4.000 m³/h
Sound pressure (outdoor)	63 dB(A)
Power supply	380-415 V / 3 / 50 Hz
Circuit breaker / Fuse	32 / 25 A
Power wiring (outdoor)	(4+T)x2,50 mm²
Interconnection wiring (outdoor - indoor)	(3+T)x1 mm²
Controller communication wiring	2x0,5 mm² (≤20 m) / 2x0,75-1,25 mm² (≤50 m)
XYE communication BUS (shielded)	3x0,75 mm²

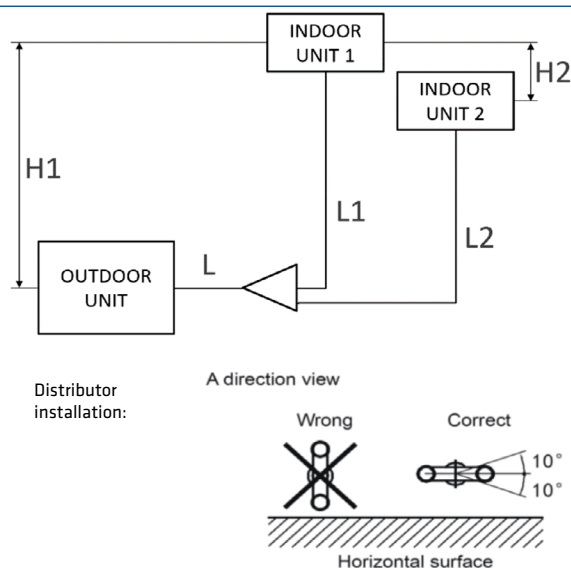
WIRING DIAGRAM



NOTES:
(1) The data and specifications present in this sheet may vary without notice.
(2) The images on this sheet are indicative and may be different from the final machine.

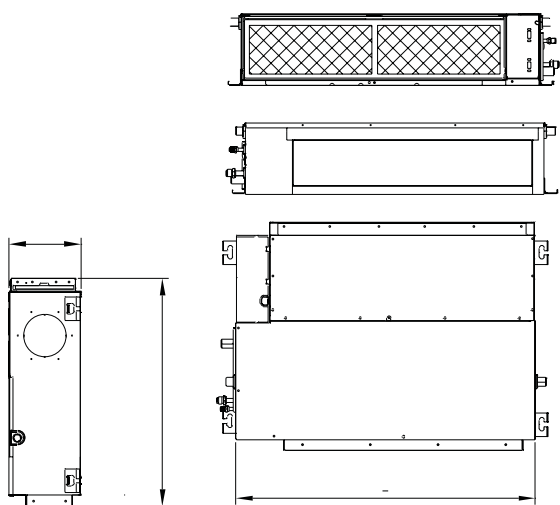
COOLING CONNECTION

Model	2x KPD-71 DR14 / KUE-140 DTR13	
Refrigerating pipes (L)	Ø3/8" / Ø5/8"	
Refrigerating pipes (L1 & L2)	Ø3/8" / Ø5/8"	
Refrigerant charge	2,40 kg	
Indoor drain pipe	Ø25 mm	
Max. pipe length	65 m	
Max. level difference between outdoor & indoor unit (H1)	20 m	
Max. level difference between indoor units (H2)	0,50 m	
Max. pipe length (L1 & L2)	15 m	
Difference between pipes (L1-L2)	10 m	



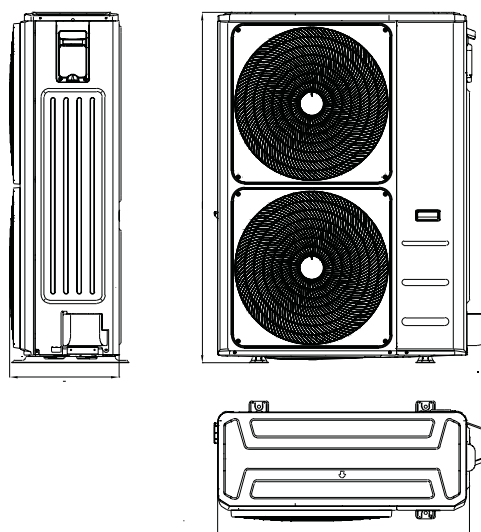
DIMENSIONS & WEIGHT INDOOR

Model	KPD-71 DR14
Width	1.100 mm
Height	249 mm
Depth	774 mm
Weight	32,30 kg



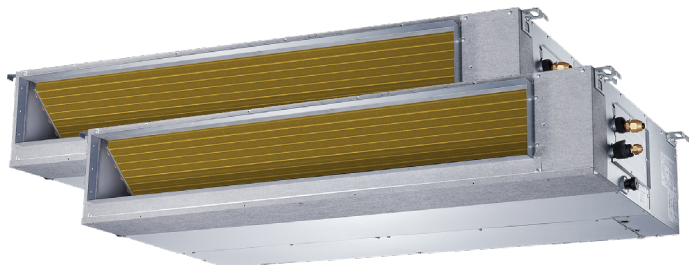
DIMENSIONS & WEIGHT OUTDOOR

Model	KUE-140 DTR13
Width	946 mm
Height	810 mm
Depth	410 mm
Weight	80,50 kg



Ducts

Twins Axial Current Loop



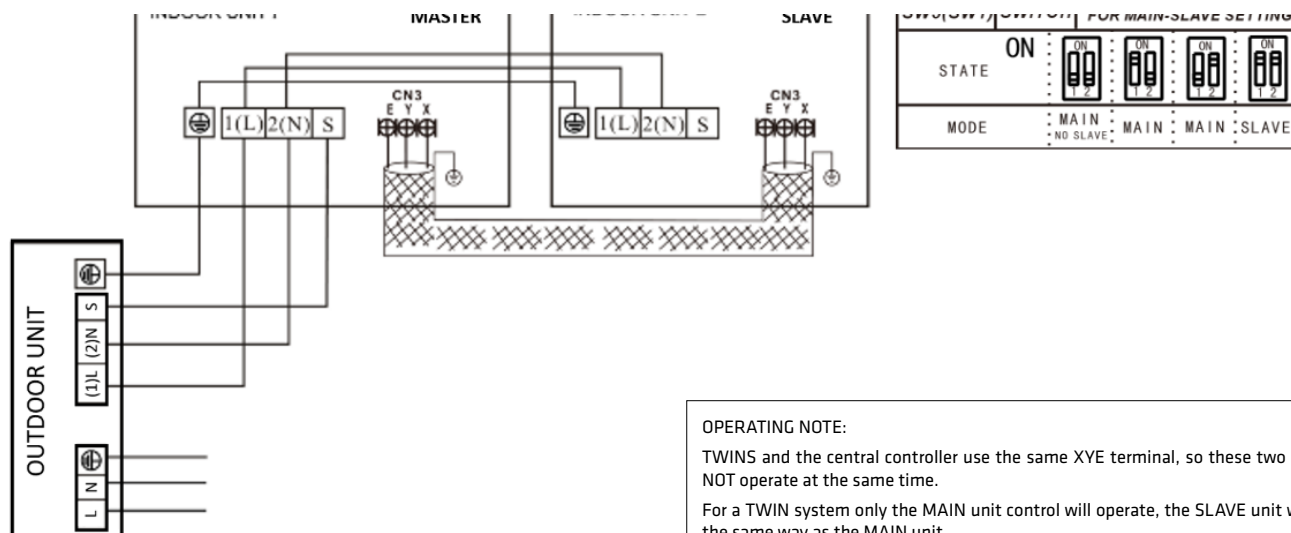
KC-03.1 SPS
Recommended
controller



FEATURES

Indoor model / Outdoor model	2x KPD-90 DR14 / KUE-160 DTR13
Cooling capacity (indoor)	2x 8,79 kW
Heating capacity (indoor)	2x 9,38 kW
Airflow (indoor)	1.560/1.780/2.060 m³/h
Sound pressure (indoor)	34,30/36,70/39,20 dB(A)
Max. available pressure	160 Pa
Airflow (outdoor)	7.500 m³/h
Sound pressure (outdoor)	64 dB(A)
Power supply	380-415 V / 3 / 50 Hz
Circuit breaker / Fuse	32 / 25 A
Power wiring (outdoor)	(4+T)x2,50 mm²
Interconnection wiring (outdoor - indoor)	(3+T)x1 mm²
Controller communication wiring	2x0,5 mm² (≤20 m) / 2x0,75-1,25 mm² (≤50 m)
XYE communication BUS (shielded)	3x0,75 mm²

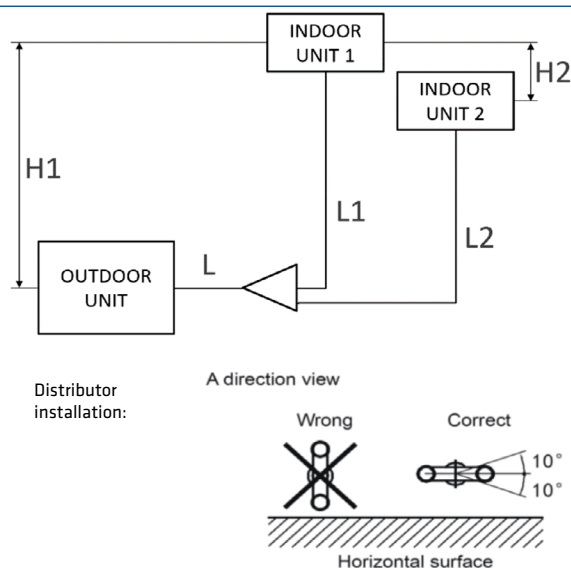
WIRING DIAGRAM



NOTES:
(1) The data and specifications present in this sheet may vary without notice.
(2) The images on this sheet are indicative and may be different from the final machine.

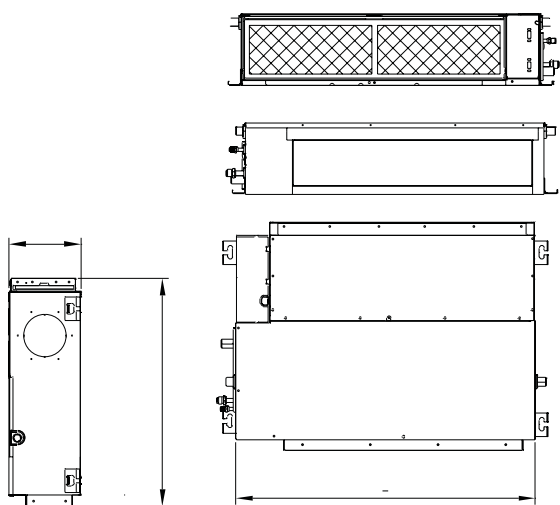
COOLING CONNECTION

Model	2x KPD-90 DR14 / KUE-160 DTR13	
Refrigerating pipes (L)	Ø3/8" / Ø5/8"	
Refrigerating pipes (L1 & L2)	Ø3/8" / Ø5/8"	
Refrigerant charge	3 kg	
Indoor drain pipe	Ø25 mm	
Max. pipe length	65 m	
Max. level difference between outdoor & indoor unit (H1)	20 m	
Max. level difference between indoor units (H2)	0,50 m	
Max. pipe length (L1 & L2)	15 m	
Difference between pipes (L1-L2)	10 m	



DIMENSIONS & WEIGHT INDOOR

Model	KPD-90 DR14
Width	1.260 mm
Height	249 mm
Depth	774 mm
Weight	40,50 kg



DIMENSIONS & WEIGHT OUTDOOR

Model	KUE-160 DTR13
Width	952 mm
Height	1.333 mm
Depth	415 mm
Weight	107 kg

