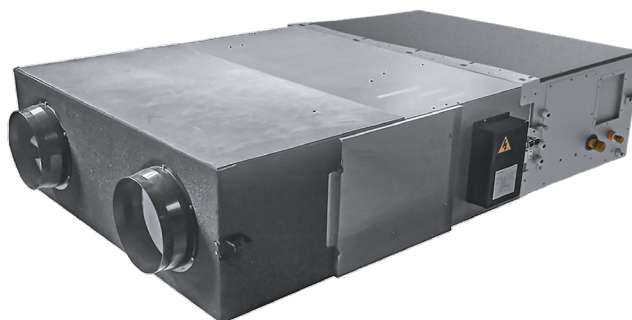


Heat Recovery Range

HRV DX2

PRODUCT SHEET



KCT-03 SRPS (A)
Standard controller

Product certified by:



FEATURES

Model	KRE-500DX1	KRE-1000DX1
Total power (cooling ¹ / heating ²)	3 kW / 2,5 kW	5,8 kW / 5,2 kW
Temperature approx. in supply (cooling ¹ / heating ²)	15,9°C / 28°C	16,2°C / 28,5°C
Heating efficiency EN308 ³	76%	76%
Expansion valve	Electronic	
No. speeds	3	3
Fan type	EC	EC
Air flow rated ⁴	500 m ³ /h	1.000 m ³ /h
Sound pressure rated ⁵	39 dB(A)	43 dB(A)
Rated useful static pressure in supply ⁴	90 Pa	115 Pa
Installed weight	90 kg	105 kg
Power supply	230 V / 1 / 50 Hz	
Filtration stages supply/return ⁴	G3+F9 / G3	G3+F9 / G3
Gas DX battery	R-410A	R-410A
Working range ⁶	-5°C ~ 40°C	

¹ Air inlet in DX coil: 13°C BS 40% RH, condensing at 40°C.

² Air inlet in DX coil: 28.5°C BS 50%, evaporating at 7°C.

³ According to regulation UE1253/2014, at nominal performance, with temperature and humidity conditions according to EN308.

⁴ Including filters.

⁵ Sound pressure level at 1 m from the driven unit and nominal flow.

⁶ Std. unit.

REFRIGERATION CONNECTIONS

Model	KRE-500DX1	KRE-1000DX1	Ø Tube	Tightening torque	Tube thickness
Gas pipe	Ø 12,7 mm		Ø6,35 (1/4")	14 - 18 N·m	0,8 mm
Liquid pipe	Ø 6,35 mm		Ø12,7 (1/2")	49 - 55 N·m	0,8 mm

NOTES:

(1) The data and specifications present in this sheet may vary without notice.

(2) The images on this sheet are indicative and may be different from the final machine.

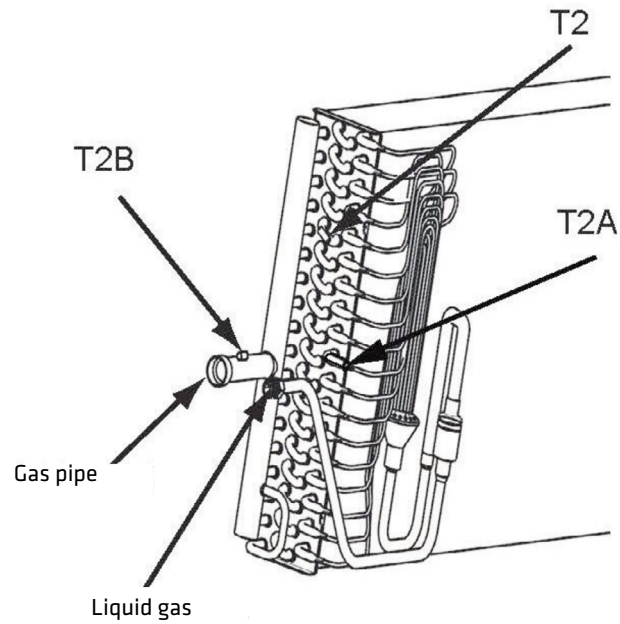
T1: is an AHU inlet air temperature sensor; it should be installed at the air inlet of the AHU.

T2A: is an AHU evaporator inlet temperature sensor; it should be installed at the inlet pipe of the evaporator.

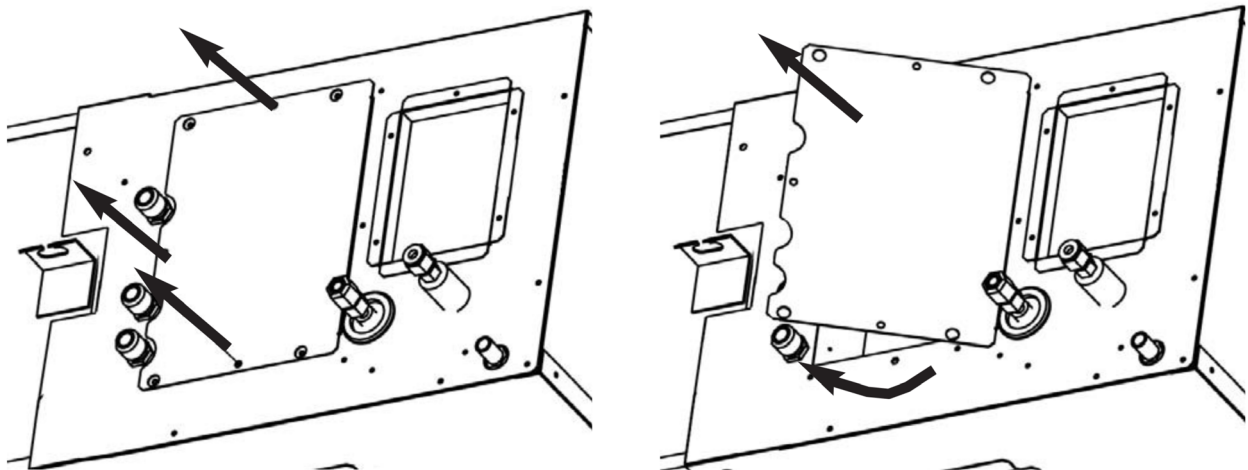
T2: is an AHU evaporator intermediate temperature sensor; it should be installed at the intermediate pipe of the evaporator.

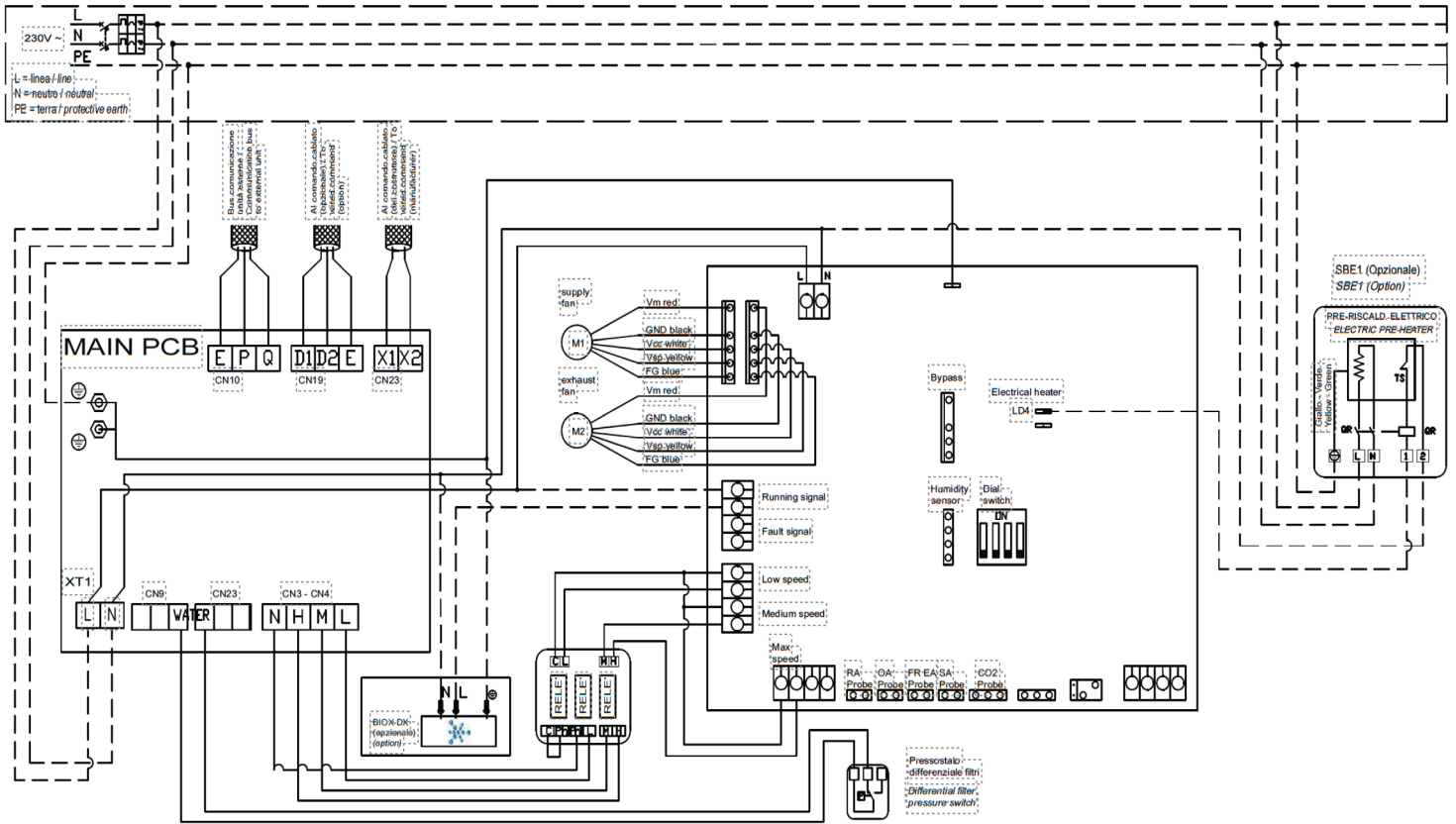
T2B: is an AHU evaporator outlet sensor; it should be installed at the outlet pipe of the evaporator.

TA: is an outlet air temperature sensor and therefore does not need to be installed if outlet air temperature control is not selected.

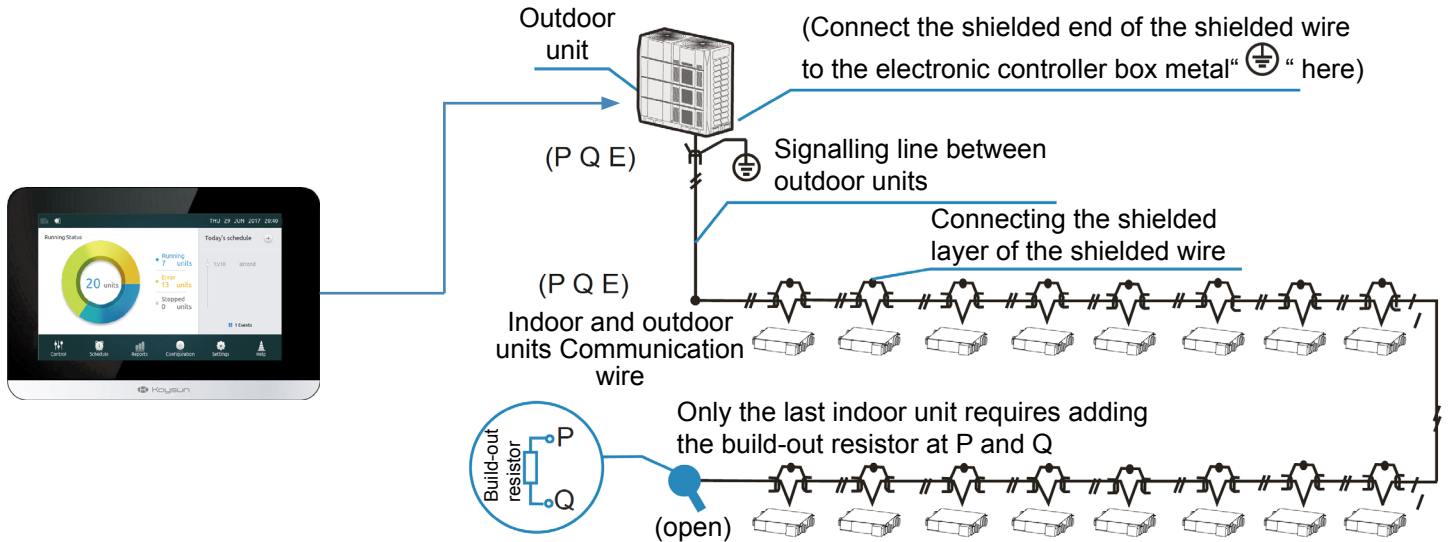


ELECTRICAL CONNECTIONS



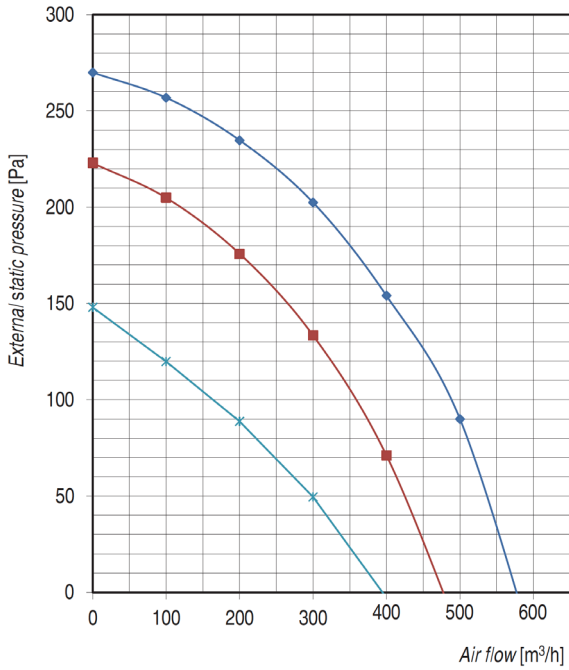


CONNECTIONS TO CENTRALISED CONTROLLER VRF

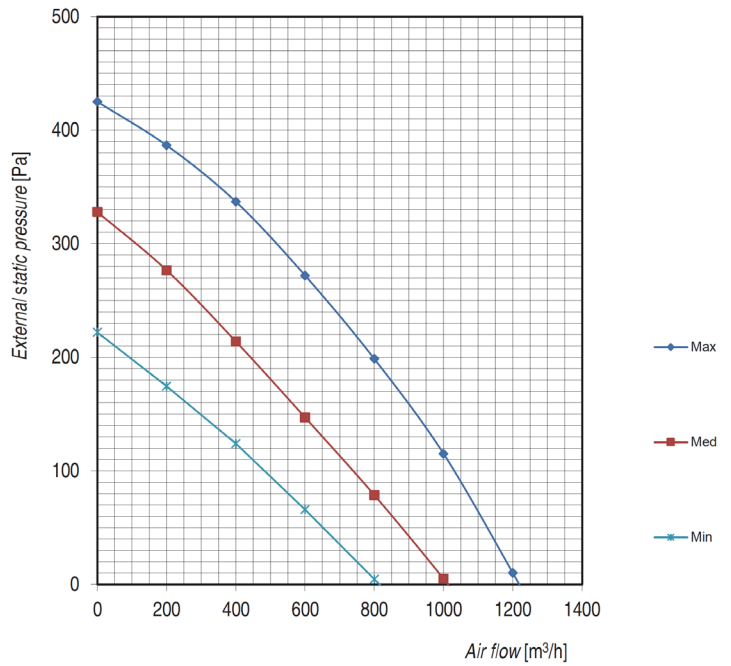


SUPPLY FAN PERFORMANCE

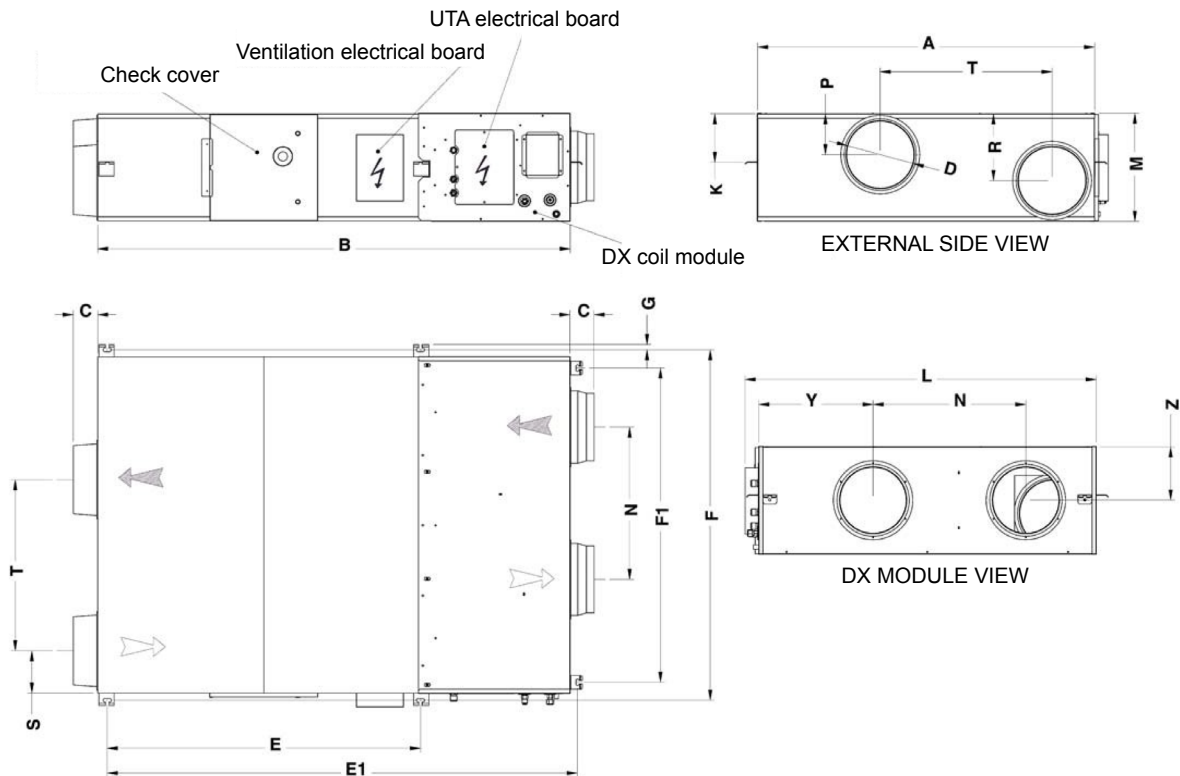
KRE-500DX1



KRE-1000DX1



DIMENSIONS



Model	A	B	C	D	E	E1	F	F1	G	L	T	K	M	N	P	R	S	Y	Z
KRE-500DX1	924	1450	107	200	825	1445	960	830	19	955	500	135	270	350	135	135	202	350	135
KRE-1000DX1	1216	1750	85	250	1130	1750	1273	1140	19	1290	621	171	388	550	146	241	151	415	195

INSTALLATION

* Unit for indoor installation

