

Wall-Mounted

PRODUCT SHEET



KI-04 S

Recommended controller

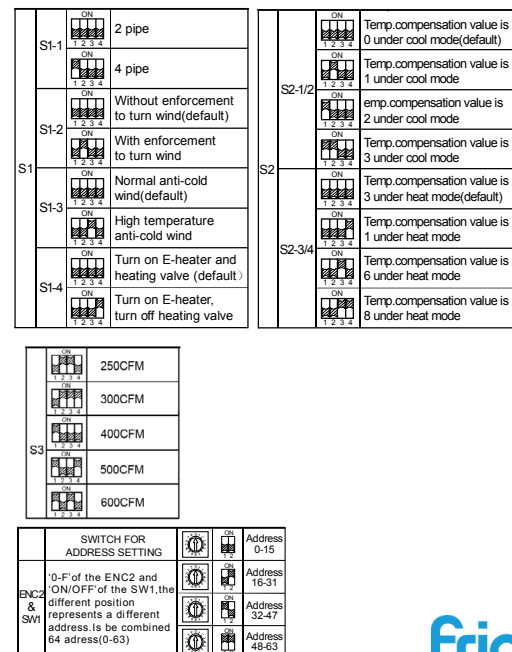
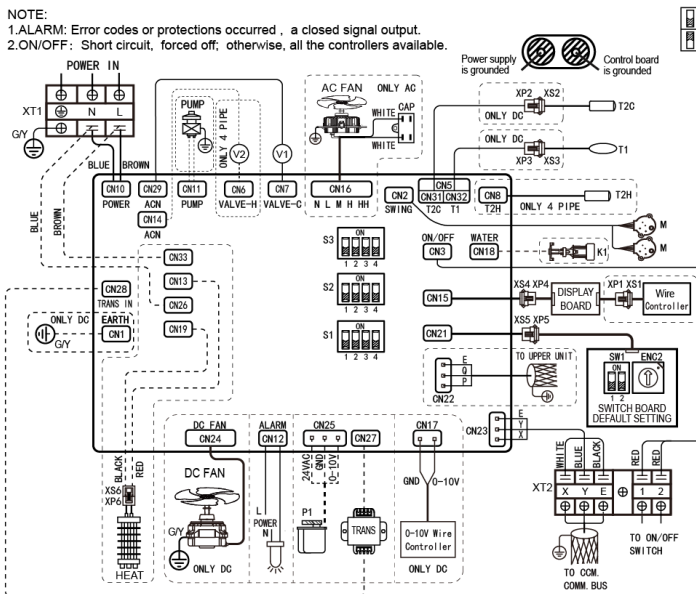
Product certified by:



FEATURES

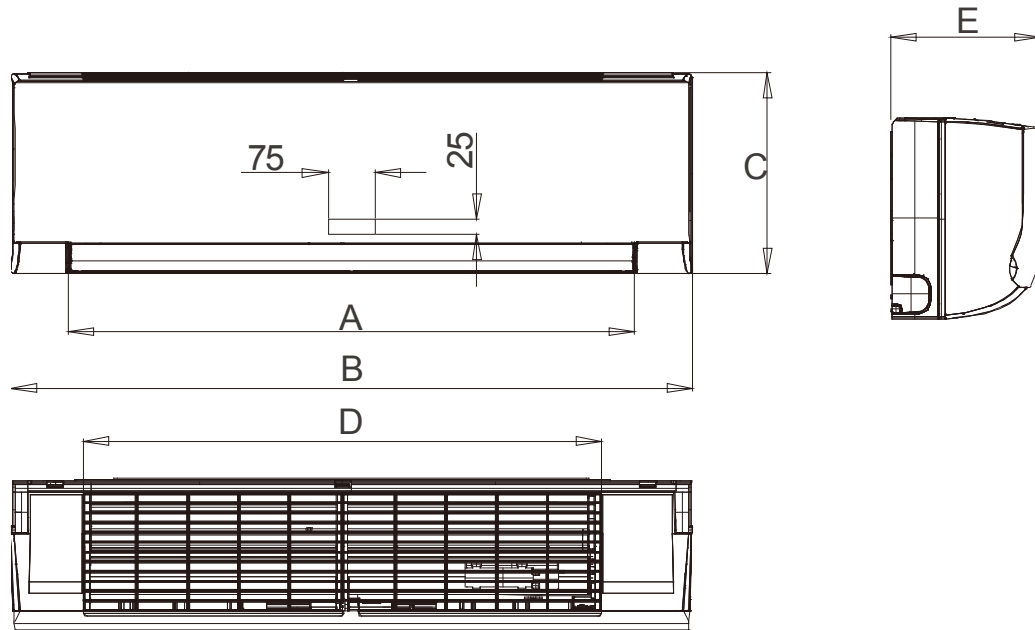
Model	KFC-AY-2T-250D2	KFC-AY-2T-400D2	KFC-AY-2T-600D2
Cooling capacity	2,39 / 2,70 kW	2,88 / 3,81 kW	3,79 / 4,87 kW
Heating capacity	2,58 / 2,94 kW	3,09 / 4,30 kW	3,96 / 5,26 kW
Power input	8 / 13 W	15 / 34 W	18 / 38 W
Airflow	400/454/492 m ³ /h	590/689/825 m ³ /h	717/849/979 m ³ /h
Sound pressure	27/30/32 dB(A)	35/39/45 dB(A)	35/40/44 dB(A)
Water flow cooling	0,42 / 0,48 m ³ /h	0,51 / 0,67 m ³ /h	0,65 / 0,85 m ³ /h
Evaporator pressure drop cool.	25,40 / 31,60 kPa	33 / 56,70 kPa	33,70 / 50,70 kPa
Evaporator pressure drop heat.	30,20 / 32,70 kPa	35,70 / 51,90 kPa	33 / 47,10 kPa
Hydraulic connections	Ø3/4"	Ø3/4"	Ø3/4"
Power supply	220-240 V / 1 / 50 Hz		
Power wiring	(2+T)x2,50 mm ²		

WIRING DIAGRAM



NOTES:
(1) The data and specifications present in this sheet may vary without notice.
(2) The images on this sheet are indicative and may be different from the final machine.

DIMENSIONS & WEIGHT



Model	A	B	C	D	E	Weight
KFC-AY-2T-250D2	732 mm	915 mm	290 mm	663 mm	230 mm	12,70 kg
KFC-AY-2T-400D2	732 mm	915 mm	290 mm	663 mm	230 mm	12,70 kg
KFC-AY-2T-600D2	892 mm	1.072 mm	315 mm	813 mm	230 mm	14,90 kg

INSTALLATION

