

ORIGINAL
MANUAL



OWNER'S MANUAL

Air Purifier

KPU-700.1



IMPORTANT NOTE:

Thank you very much for purchasing our air conditioner,
Before using your air conditioner, please read this manual carefully and keep it for future
reference.

Safety Warning

Safety Matters for Attention

Note

This section describes the contents and importance of the safety matters to prevent personal injuries or property damages to the users or others. Please read the text on the basis of full understanding of the following contents (marks and icons), and be sure to abide by the safety matters as described.

Indicate [Prohibited] contents

- Do not use this appliance in wet or high temperature environment (like bathroom, toilet and kitchen).
- Before replacing the filter, please stop this appliance and cut off power.
- Do not place other items on top of the appliance, and sitting or standing on this appliance is forbidden.
- Please use the original filter provided by the factory. In case other filters are used, the best results cannot be achieved.
- Do not use damaged or aged power cords; Do not replace the power cord without authorization. If the power cord is
- damaged, it must be replaced by the manufacturer, its service department or professionals from similar departments to avoid danger.
- This appliance is only limited to 220-240V power supply, and please unplug the appliance when it is not used for a long time.
- Do not insert your fingers or objects into the air inlets or air outlets to prevent the product from physical damages or malfunction.
- Please unplug the appliance immediately and contact the service center in time when the appliance gives off abnormal sound or burnt smell or smoke.
- Do not spray flammable substances near the appliance; Do not spray water directly on the appliance or use chemical cleaners like alcohol or hydrochloric acid, etc.; Do not place water containers, medicines, or flammable materials on the appliance.
- Do not block the air inlets/outlets of the appliance with any item.

Matters that may Cause Minor Injury or Property Damages

- This appliance cannot replace natural ventilation and other appliances like the vacuum cleaner, kitchen ventilator, etc.
- When the appliance is working, it must be placed on a dry, flat and stable floor, with at least 30cm space reserved
- around it.
- Do not put it in a place with direct sunlight.
- To prevent electromagnetic disturbance, the appliance must keep a certain distance from the TV, radio, microwave
- oven and other appliances.
- The mist produced by the ultrasonic humidifier may affect the PM2.5 detection of this appliance, and both should
- maintain a certain distance.
- Do not disassemble or modify this appliance without authorization to avoid accidents.
- Do not move the appliance by pulling the power cord.
- Please take care of the children and make sure that the children do not touch the appliance to avoid accidents
- This appliance can be used by children aged from 8 years and above and persons with reduced physical, sensory
- or mental capabilities or lack of experience and knowledge if they have been given supervision or instruction

- concerning use of the appliance in a safe way and understand the hazards involved. Children shall not play
- with the appliance. Cleaning and user maintenance shall not be made by children without supervision.
- Prior to cleaning or other maintenance, the appliance must be disconnected from the supply mains.

Statement

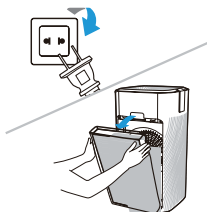
Executive standards of the product: GB 4706.1-2005, GB 4706.45-2008, GB 21551.3-2010, and GB/T 18801 2015. With the technical innovation and improvement of the product, the manual content of the same type as this product may be changed. The updated parts will not be separately notified. The legends shown in this manual are based on the appearance of standard purifiers and only used for illustrative purposes. The actual appearance shall be based on the purchased product. Due to product improvement, some parameters may be changed. The changed parameters have no retroactivity to this product. Please take the parameters on the nameplate of products as the criterion. If there is any change in the manual contents, our company will give the notice through the company's official website without separate notice; Unless explicitly stated in the notice, the changed contents have no retroactivity to this product in principle.

Safety Matters for Attention

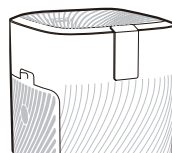
| | |
|----------------|---|
| Danger | If the appliance is not used according to the prescriptions, it may cause serious personal injury. |
| Warning | If not used according to the prescribed contents, it may cause personal injury or property damages. |



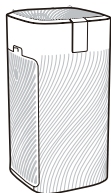
- ⊘ Do not use this appliance in wet or high temperature environment (like bathroom, toilet and kitchen).



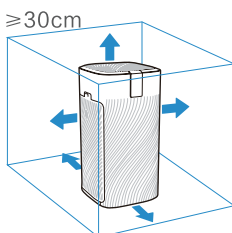
- ⊘ Before replacing the filter, please stop this appliance and cut off power.



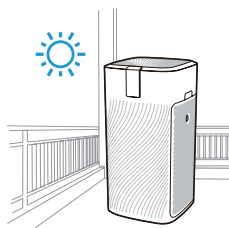
- ⊘ Do not place other items on top of the appliance, and sitting or standing on this appliance is forbidden.



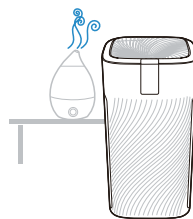
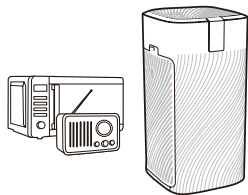
- ⚠ This appliance cannot replace natural ventilation and other appliances like the vacuum cleaner, kitchen ventilator, etc.





- ⚠ When the appliance is working, it must be placed on a dry, flat and stable floor, with at least 30cm space reserved around it.



- ⚠ Do not put it in a place with direct sunlight.



 To prevent electromagnetic disturbance, the appliance must keep a certain distance from the TV, radio, microwave oven and other appliances.

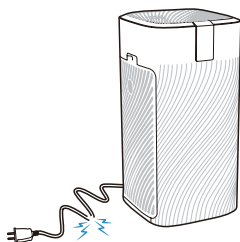
 The mist produced by the ultrasonic humidifier may affect the PM2.5 detection of this appliance, and both should maintain a certain distance.


Important Matters



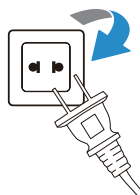
Note


This section describes the contents and importance of the matters needing attention to prevent personal injuries or property damages to the users or others. Please read the text on the basis of full understanding of the following contents (marks and icons), and be sure to abide by the safety matters as described.

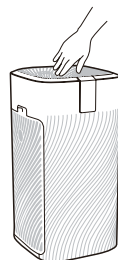



 Do not use damaged or aged power cords: Do not replace the power cord without authorization. If the power cord is damaged, it must be replaced by the manufacturer, its service department or professionals from similar departments to avoid danger

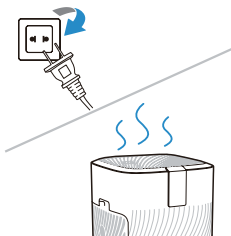
220-240V




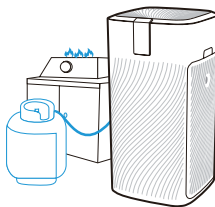
 This appliance is only limited to 220-240V power supply, and please unplug the appliance when it is not used for a long time.




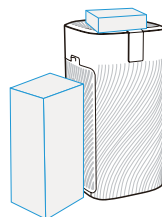
 Do not insert your fingers or objects into the air inlets or air outlets to prevent the product from physical damages or malfunction.




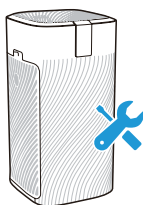
 Please unplug the appliance immediately and contact the service center in time when the appliance gives off abnormal sound or burnt smell or smoke.



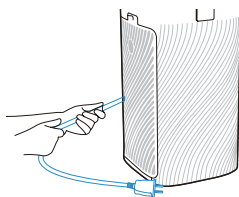
 Do not spray flammable substances near the appliance; Do not spray water directly on the appliance or use chemical cleaners like alcohol or hydrochloric acid, etc.; Do not place water containers, medicines, or flammable materials on the appliance.



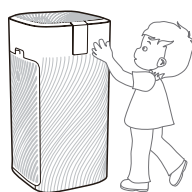
 Do not block the air inlets/outlets of the appliance with any item;



⚠ Do not disassemble or modify this appliance without authorization to avoid accidents.



⚠ Do not move the appliance by pulling the power cord.



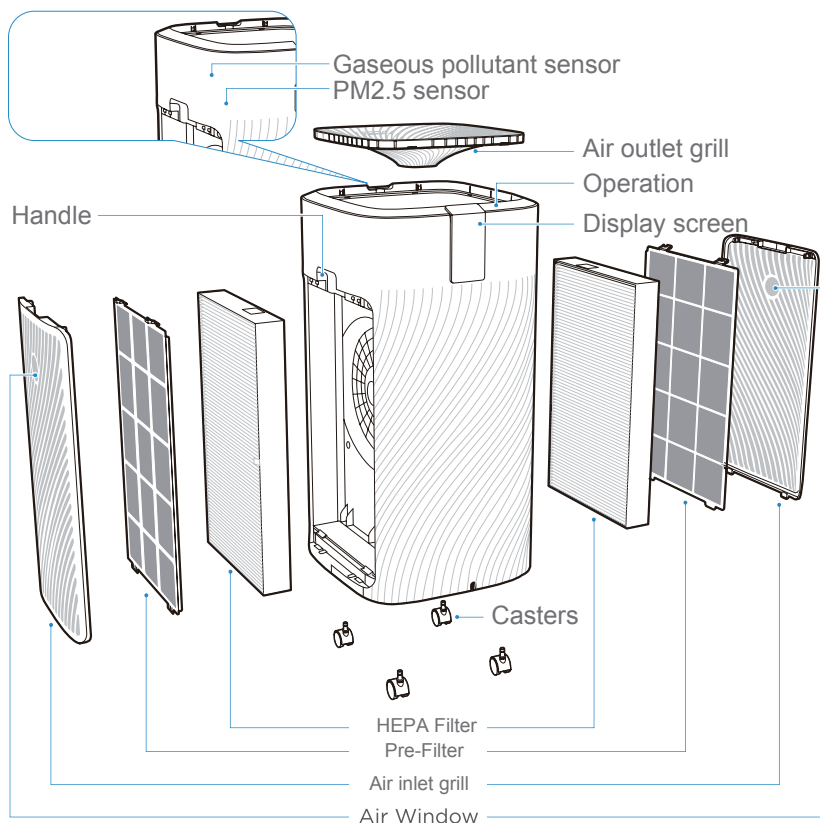
⚠ Please take care of the children and make sure that the children do not touch the appliance to avoid accidents.

Product Introduction

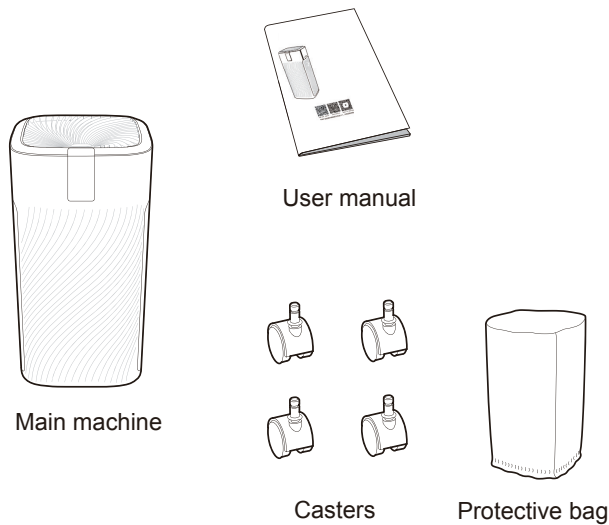
Note

Due to the different appearance of products, the pictures below are for reference only, and they will be subject to the physical products in the packing box.

Name of parts

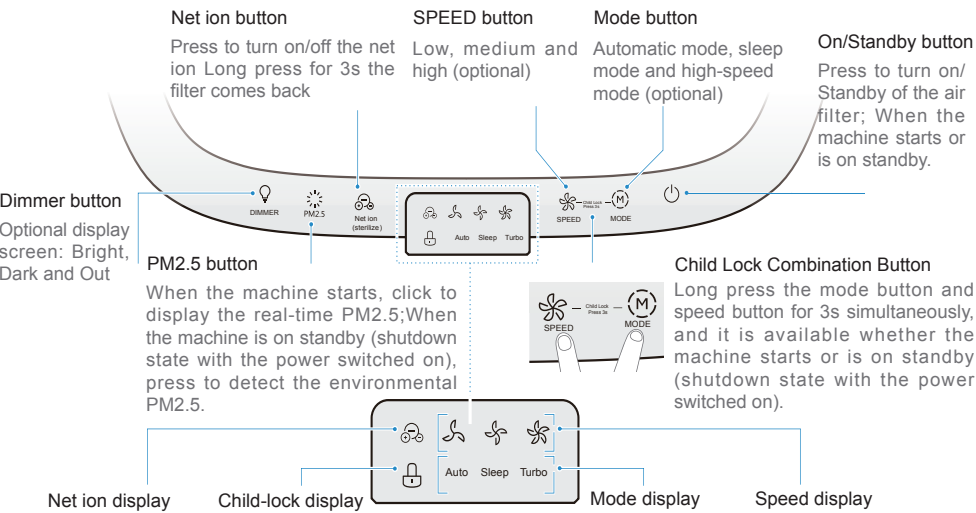


Product list

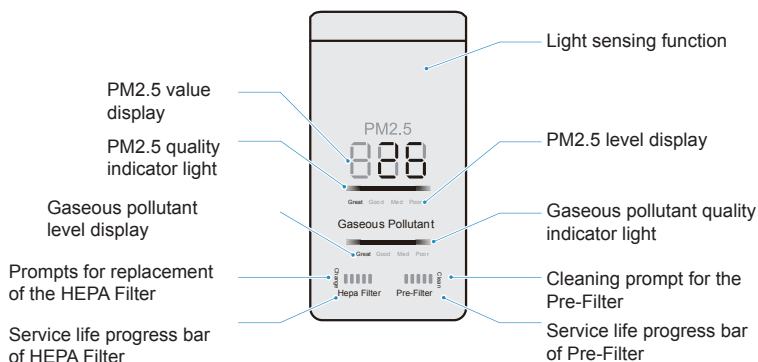


- Main machine (1)
- User manual (1)
- Casters (4)
- Protective bag (1)
- Filter screen (1 set/ 2pcs)
(Installed in the main machine)

Control panel



Display panel

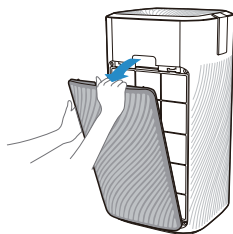


Assembly instructions

Assembly procedures

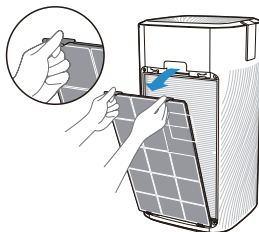
1 Take down the air inlet grill.

Grasp the clasp position and pull outward to remove the air inlet grill.



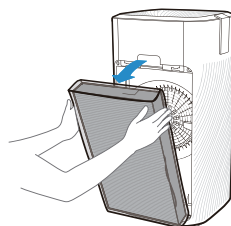
2 Take out the Pre-Filter.

Press down and pull the U-shaped snap joint, and take out the Pre-Filter.

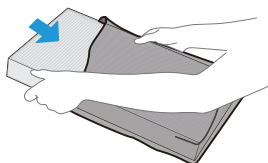


3 Take out the HEPA Filter.

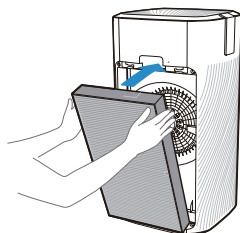
Hold both sides of the HEPA Filter with both hands, and take out the HEPA Filter.



4 Remove the protective film of the filter

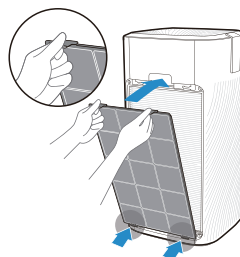


5 Assemble the HEPA Filter.



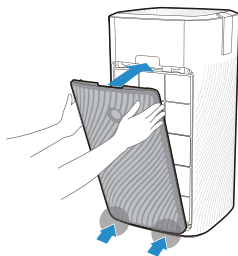
6 Assemble the Pre-Filter.

Align the slot position at the bottom, and click into the upper U-shaped snap joint.



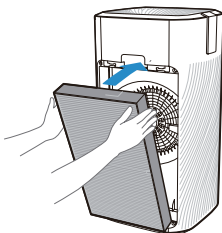
7 Assemble the air inlet grill.

Align with the slot position at the bottom, press both sides of the upper part of the air inlet grill, and clasp the air inlet grill.



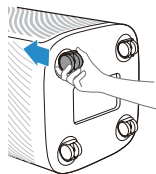
8 Assemble the filter on the other side.

Repeat Steps 1-7 to assemble the filter on the other side.

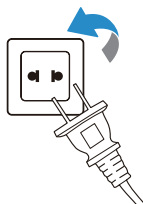


9 Install the caster

Tilt the machine body to install the casters and press into 4 casters with force in turn at the bottom



10 Then power on for operation.



Operating Manual

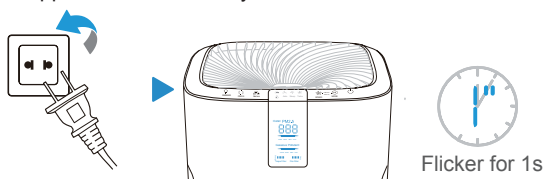
Trial operation

Note

- This appliance is provided with a disassembly protection function; the appliance can only operate normally after the air inlet grill and air outlet grill are assembled properly.
- With the power on, each time after the machine starts, it enters the working mode before the standby state.
- When powered on again after unexpected power failure (such as power failure at home or the appliance is unplugged during normal operation), it automatically restores to the working state where the power failure occurs.

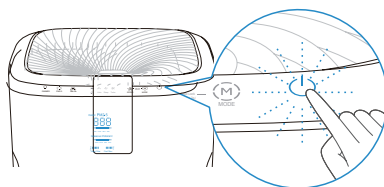
1 Preparation

Power on for the first time, the display panel flickers for 1s, and then the screen is turned off. The whole appliance is on standby state.



2 Switch

Press the On/Standby button



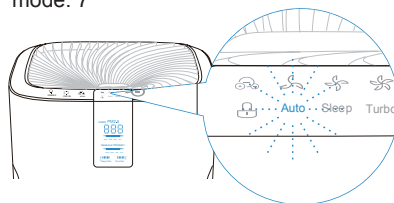
3 Pre-heating



The odor sensor is preheated, Great, Good, Med the preheating state, PM2.5 and Poor status are value displays "---"; displayed alternately, and Great, Good, Med and Poor then it displays normally statuses are displayed after 1min.

4 Work

The purifier is powered on for the first time and then enters the automatic mode. 7



Cleaning and Maintenance

⚠Note

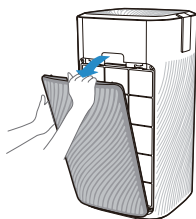
Be sure to turn it off before any maintenance, and cut off power.

Cleaning of the machine body



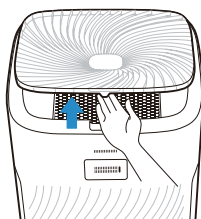
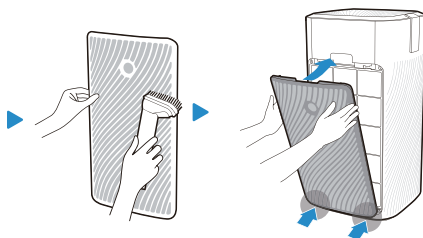
Main machine

Wipe the body with a soft towel.



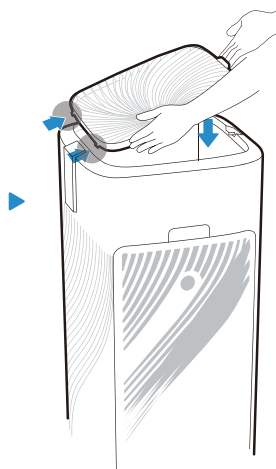
Air inlet grill

Open the air inlet grill, clean dust with a vacuum cleaner, and wipe it with a cloth.



Air outlet grill

Open the air outlet grill, clean dust with a vacuum cleaner, and wipe it with a cloth.

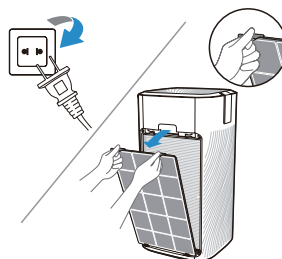


Cleaning of the filter components

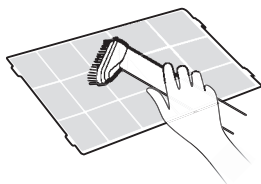
- 1** When the last bar of the progress bar turns red and the cleaning indicator light is on, it prompts that the Pre-Filter needs to be cleaned.



- 2** Unplug the appliance, and take out the Pre-Filter



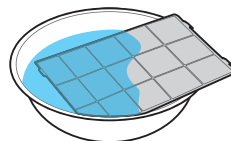
- 3** Vacuum the dust or wipe it with a cloth.



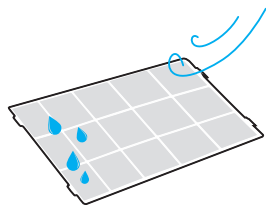
- 4** If there is a lot of dirt, the common kitchen detergents is diluted and used first, and then do the cleaning.



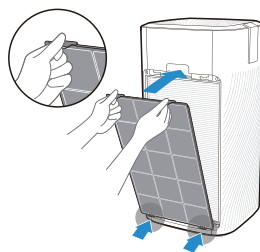
Soaking time is about 10min.



- 5** Dry the Pre-Filter



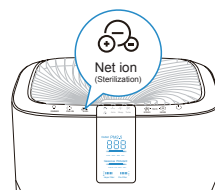
- 6** Assemble the Pre-Filter



- 7** Plug in the appliance, and start it.

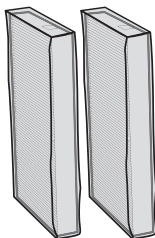


- 8** Long press the net ion button for 3s, the cleaning indicator light is off, and the Pre-Filter is restored.



Replacement of the filter components

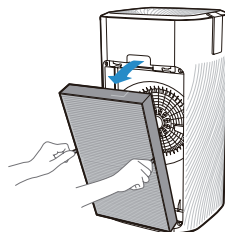
- 1** Filter model: FC-70H-1B
(The unit needs 2 filters)



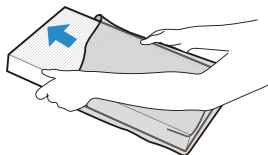
- 2** When the last bar of the progress bar turns red and the replacement indicator light is on, it prompts that the HEPA Filter needs to be replaced.



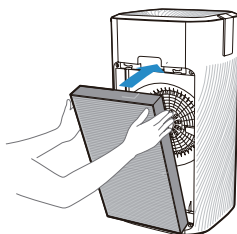
- 3** Take out the HEPA Filter.



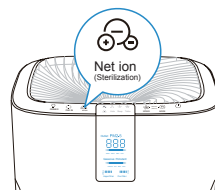
- 4** Remove the protective film of the filter.



- 5** After installing the new HEPA Filter provided by the original factory, it can be run with the machine and the HEPA Filter will be reset automatically without any other operation.



- 6** Under other circumstances, long press the net ion button for 3s, the replacement indicator light is off, and the HEPA Filter is restored



Service Guide

Faults Handling

Before inviting someone to inspect or repair, please check the following items.

| Faults phenomena | Treatment |
|---|---|
| The display screen shows "E3" | The speed is out of control: contact the after-sales office for treatment. |
| The display screen shows "EO" | Main control EEPROM hardware failure, and contact the after-sales office for treatment. |
| The display screen shows "E1" | The fault is because of disassembly protection, and the air inlet and outlet grilles are not assembled properly: assemble the air inlet grilles and air outlet grilles properly. |
| The display screen shows "EU" | PM2.5 air inlet sensor communication failure: contact the after-sales office for treatment |
| The purifier is not working | Firstly, check whether the power cord is plugged into the power socket, the loose plug caused by the movement of the purifier may affect the energizing; Secondly, check whether the air inlet grill and air outlet grill of the purifier are assembled properly. This appliance is provided with a disassembly protection function. If the air inlet grill and air outlet grill are not assembled properly, the machine cannot work. |
| The purifier has a small amount of air and is noisy | Firstly, check whether the foreign matters block the air inlet grill and air outlet grill. If any, remove those foreign matters; Then, check whether the Pre-Filter becomes dirty or reaches the end of its service life; and clean the Pre-Filter; Finally, check whether the HEPA Filter is full of dust or reaches the end of its service life. This time the replacement of the HEPA Filter is required. |
| The air outlet smells odorous | When the appliance is operated for the first time, it smells slightly plastic, which is normal; If this appliance works in places (like smoking area or rotisserie, etc.) with strong smell for a long time, you need to change the filter element frequently and reset it; Check whether the air inlet/outlet grill and Pre-Filter are full of dust or dirt; if any, maintain the appliance and clean the dust and dirt on the air inlet/outlet grill and Pre-Filter |

| Faults phenomena | Treatment |
|--|--|
| Whether the wheels are pulled out after inserted | Yes, tilt the machine at a small angle and pull them out with a little effort. If the effort fails, try to pull the wheels out while turning them. |
| Whether the purifier can be used with the humidifier | The wet environment has a greater impact on the filter element, and the mist produced by the ultrasonic humidifier may cause abnormality in the PM2.5 detection of this appliance, so that simultaneous operation should be avoided as much as possible. |

Product parameters

| | |
|--|----------------------|
| Model | KPU-700.1 |
| Power supply | 220-240V |
| Rated power | 45W |
| CADR (particulate matters) | 740m ³ /h |
| Purification energy efficiency rating of the particulate matters | Efficient level |
| Noise | ≤57dB |

- The various performance parameters in the table are measured in the factory and for reference only.
- Due to product improvement, some parameters may be changed, and take the parameters on the nameplate of products as the criterion.
- Purification principle: The fan of the air purifier draws air into the machine to be filtered through the built-in filter element, which
- plays a main role in filtering the dust (like PM2.5, etc.), formaldehyde, odor, sterilization and so on.

Environment-friendly List

| Name of parts | Harmful substances | | | | | |
|-------------------------|--------------------|--------------|--------------|------------------------------|--------------------------------|-----------------------|
| | Plumbum (Pb) | Mercury (Hg) | Cadmium (Cd) | Hexavalent chromium (Cr(VI)) | Polybrominated biphenyls (PBB) | Diphenyl ether (PBDE) |
| Shell component | ○ | ○ | ○ | ○ | ○ | ○ |
| Power cord component | × | ○ | ○ | ○ | ○ | ○ |
| Motor component | ○ | ○ | ○ | ○ | ○ | ○ |
| Appliance component | ○ | ○ | × | ○ | ○ | ○ |
| Wind wheel component | ○ | ○ | ○ | ○ | ○ | ○ |
| Circuit board component | × | ○ | × | ○ | ○ | ○ |
| Filter component | ○ | ○ | ○ | ○ | ○ | ○ |

This table is prepared in line with the SJ/T 11364

O: Indicates that the content of the hazardous substance in all homogeneous materials of this component is below the limit prescribed in GB/T 26572.

X: Indicates that the content of this hazardous substance in at least one homogeneous material of this component is above the limit prescribed in GB/T 26572. But, it is extremely difficult to make the product parts completely free of the above-mentioned harmful substances under the existing technical conditions. In the future, the design will be improved gradually with the technical progress.



MAIN OFFICE

Blasco de Garay, 4-6
08960 Sant Just Desvern
(Barcelona)
Tel. +34 93 480 33 22
<http://www.frigicoll.es/>
<http://www.kaysun.es/en/>

MADRID

Senda Galiana, 1
Polígono Industrial Coslada
Coslada (Madrid)
Tel. +34 91 669 97 01
Fax. +34 91 674 21 00
madrid@frigicoll.es