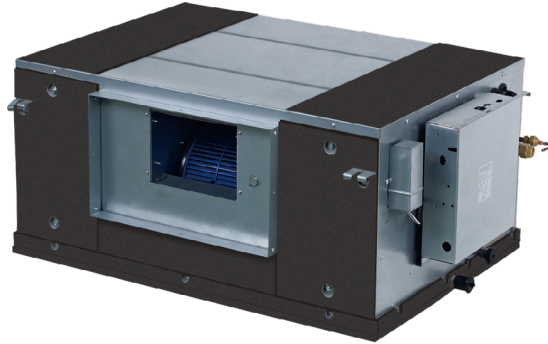



High Pressure Ducts

PRODUCT SHEET

KPDHF-71 DN4.0 / KPDHF-90 DN4.0 / KPDHF-112 DN4.0



KCT-03 SR
Recommended controller

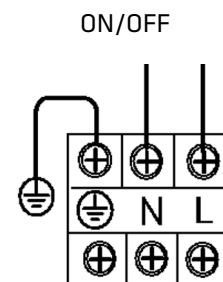
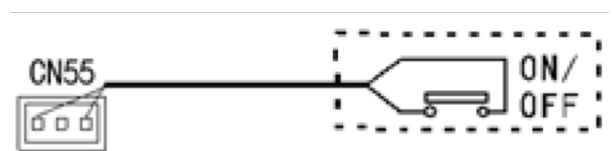
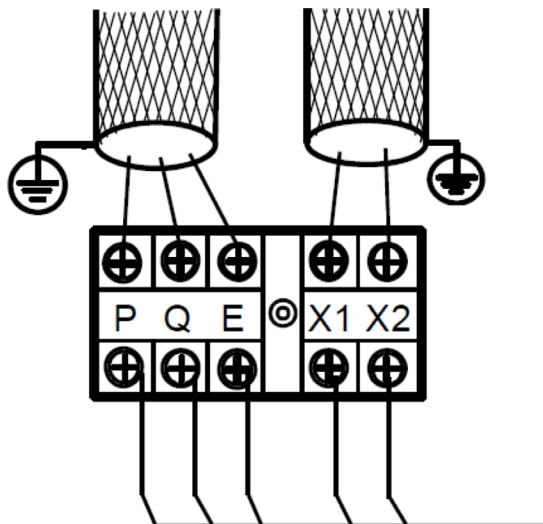
Product certified by: 



FEATURES

Model	KPDHF-71 DN4.0	KPDHF-90 DN4.0	KPDHF-112 DN4.0
Cooling capacity	7,10 kW	9 kW	11,20 kW
Heating capacity	8 kW	10 kW	12,50 kW
Power input	180 W	220 W	380 W
Airflow	1.159/1.197/1.234/1.264/ 1.296/1.333/1.360 m ³ /h	1.151/1.195/1.237/1.264/ 1.328/1.378/1.428 m ³ /h	1.354/1.429/1.528/1.614/ 1.695/1.775/1.886 m ³ /h
Max. static pressure	200 Pa	200 Pa	200 Pa
Sound pressure	42/43/44/45/45/46/46 dB(A)	45/46/47/48/49/50/50 dB(A)	45/46/47/48/49/50/50 dB(A)
Pipe diameter	Ø3/8" / Ø5/8"	Ø3/8" / Ø5/8"	Ø3/8" / Ø3/4"
Drain tube diameter	Ø25 mm	Ø25 mm	Ø25 mm
Power supply	220-240 V / 1 / 50 Hz		
Max. input	15 A	15 A	15 A
Power wiring	(2+T)x2,50 mm ²	(2+T)x2,50 mm ²	(2+T)x2,50 mm ²
Shielded communication wiring	3x0,75 mm ²	3x0,75 mm ²	3x0,75 mm ²

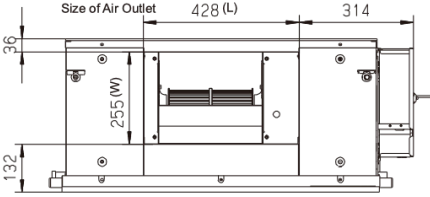
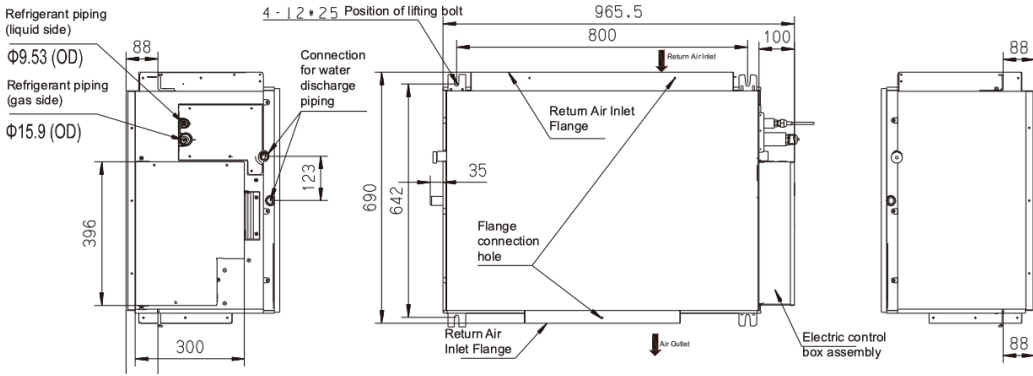
WIRING DIAGRAM



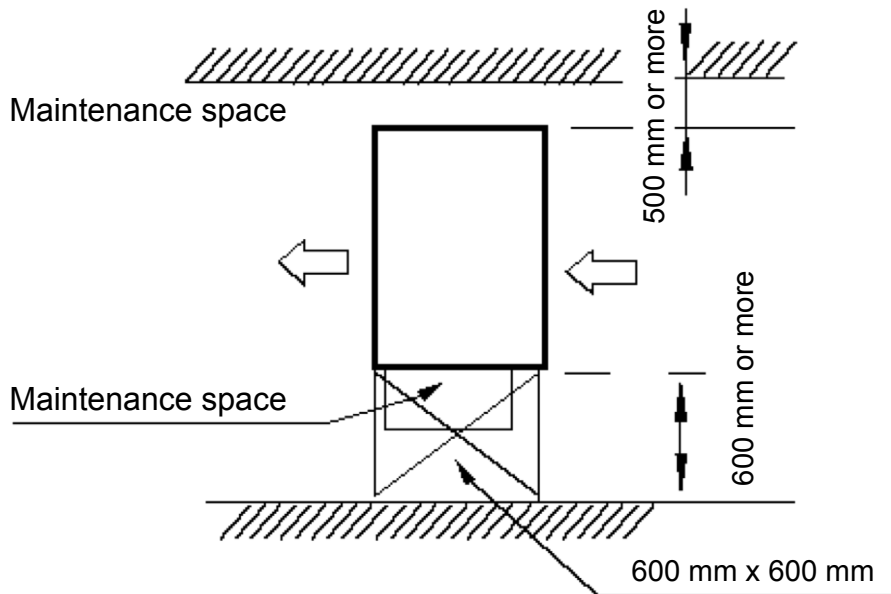
Power supply terminal

NOTES:
(1) The data and specifications present in this sheet may vary without notice.
(2) The images on this sheet are indicative and may be different from the final machine.

DIMENSIONS & WEIGHT

Model	KPDHF-71 DN4.0	KPDHF-90 DN4.0	KPDHF-112 DN4.0
			
			
Weight	41 kg	51 kg	51 kg

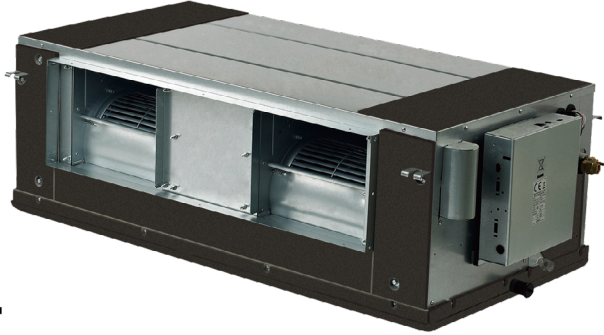
INSTALLATION




High Pressure Ducts

KPDHF-140 DN4.0 / KPDHF-160 DN4.0

PRODUCT SHEET



KCT-03 SR
Recommended controller

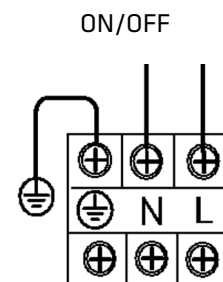
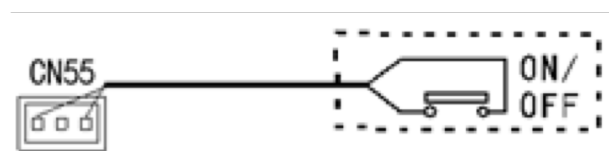
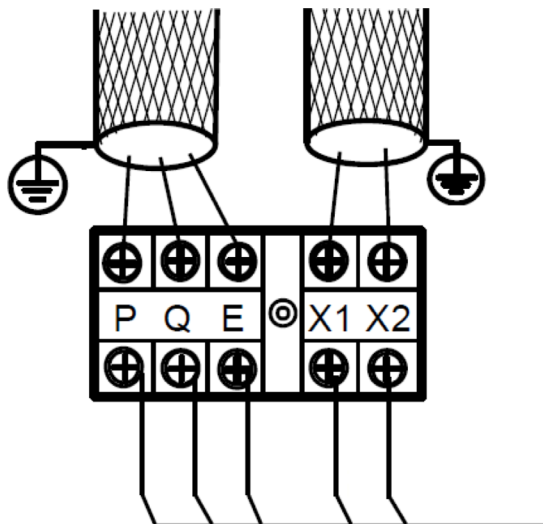
Product certified by: 



FEATURES

Model	KPDHF-140 DN4.0	KPDHF-160 DN4.0
Cooling capacity	14 kW	16 kW
Heating capacity	16 kW	17 kW
Power input	420 W	700 W
Airflow	1.601/1.707/1.818/1.927/ 2.033/2.127/2.258 m ³ /h	1.879/2.013/2.099/2.239/ 2.354/2.501/2.608 m ³ /h
Max. static pressure	200 Pa	200 Pa
Sound pressure	48/49/50/51/51/52/53 dB(A)	50/50/51/52/53/54/54 dB(A)
Pipe diameter	Ø3/8" / Ø3/4"	Ø3/8" / Ø3/4"
Drain tube diameter	Ø25 mm	Ø25 mm
Power supply	220-240 V / 1 / 50 Hz	220-240 V / 1 / 50 Hz
Max. input	15 A	15 A
Power wiring	(2+T)x2,50 mm ²	(2+T)x2,50 mm ²
Shielded communication wiring	3x0,75 mm ²	3x0,75 mm ²

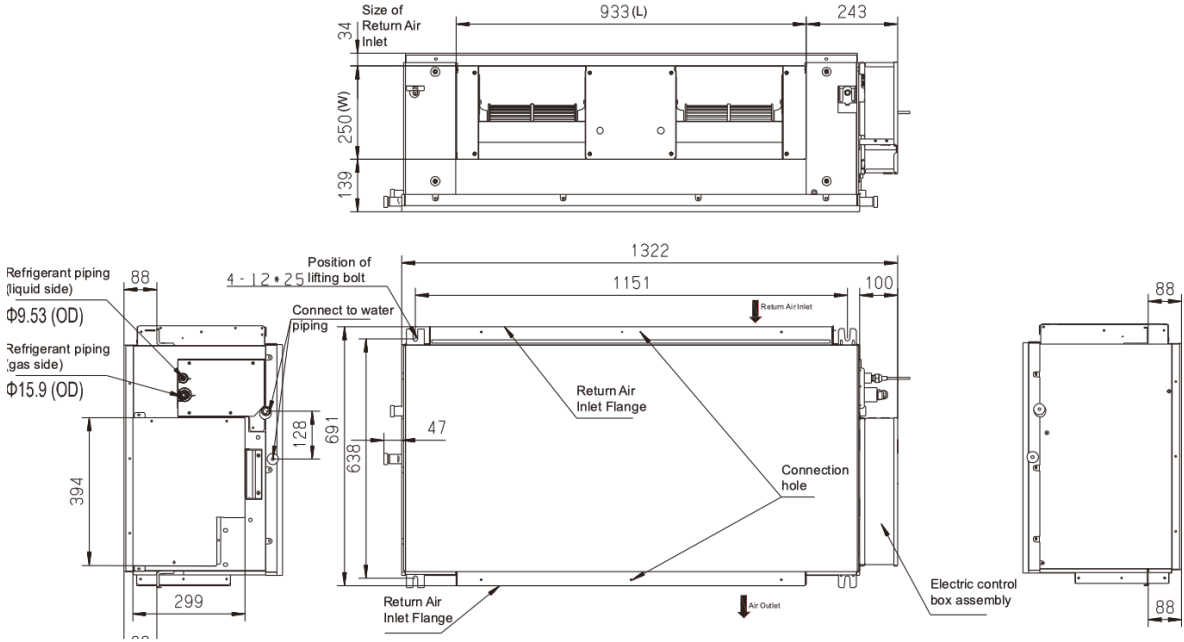
WIRING DIAGRAM



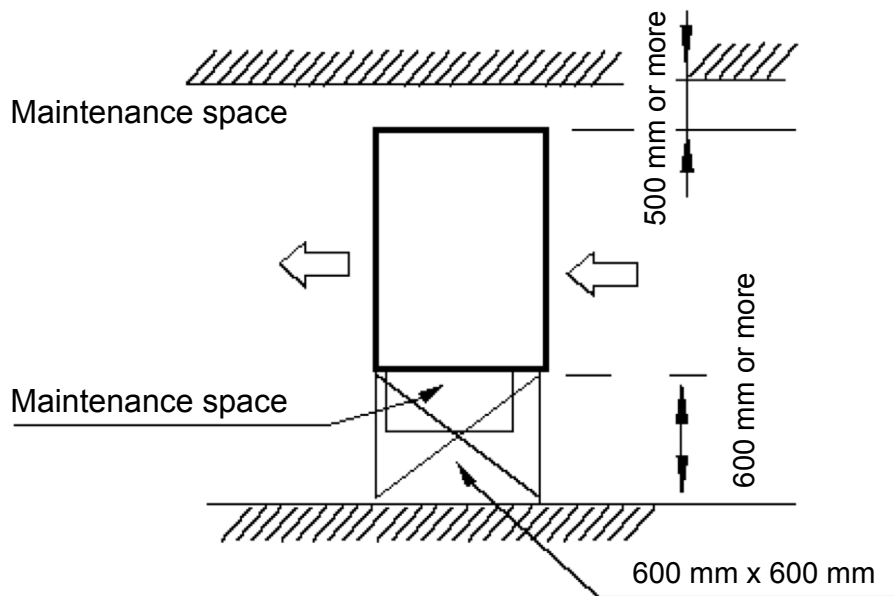
Power supply terminal

NOTES:
(1) The data and specifications present in this sheet may vary without notice.
(2) The images on this sheet are indicative and may be different from the final machine.

DIMENSIONS & WEIGHT

Model	KPDHF-140 DN4.0	KPDHF-160 DN4.0
		
Weight	63 kg	63 kg

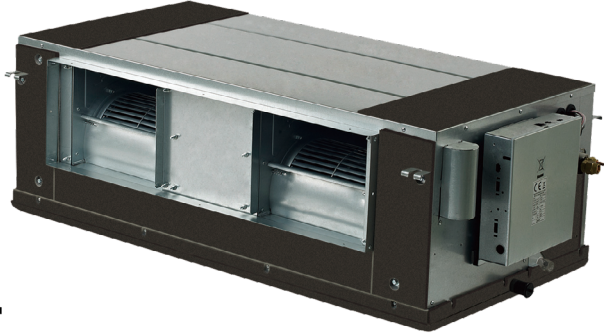
INSTALLATION




High Pressure Ducts

PRODUCT SHEET

KPDHF-200 DN4.0 / KPDHF-250 DN4.0 / KPDHF-280 DN4.0



KCT-03 SR
Recommended controller

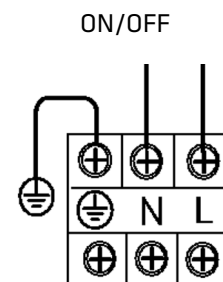
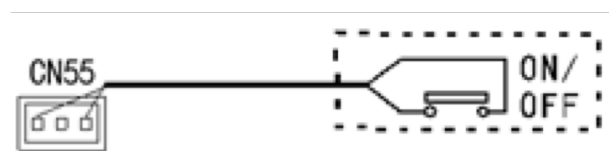
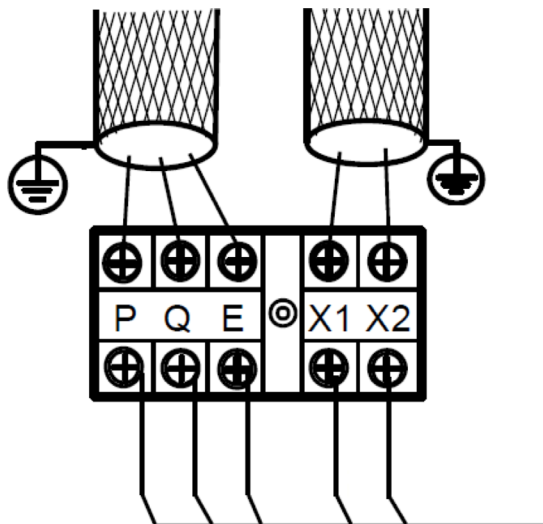
Product certified by: 



FEATURES

Model	KPDHF-200 DN4.0	KPDHF-250 DN4.0	KPDHF-280 DN4.0
Cooling capacity	20 kW	25 kW	28 kW
Heating capacity	22,50 kW	26 kW	31,50 kW
Power input	990 W	1.200 W	1.200 W
Airflow	3.745/3.837/3.941/4.043/ 4.144/4.237/4.358 m ³ /h	3.745/3.837/3.941/4.043/ 4.144/4.237/4.358 m ³ /h	3.745/3.837/3.941/4.043/ 4.144/4.237/4.358 m ³ /h
Max. static pressure	250 Pa	250 Pa	250 Pa
Sound pressure	50/52/53/54/55/56/57 dB(A)	50/52/53/54/55/56/57 dB(A)	50/52/53/54/55/56/57 dB(A)
Pipe diameter	Ø1/2" / Ø7/8"	Ø1/2" / Ø7/8"	Ø1/2" / Ø7/8"
Drain tube diameter	Ø32 mm	Ø32 mm	Ø32 mm
Power supply	220-240 V / 1 / 50 Hz	220-240 V / 1 / 50 Hz	220-240 V / 1 / 50 Hz
Max. input	15 A	15 A	15 A
Power wiring	(2+T)x2,50 mm ²	(2+T)x2,50 mm ²	(2+T)x2,50 mm ²
Shielded communication wiring	3x0,75 mm ²	3x0,75 mm ²	3x0,75 mm ²

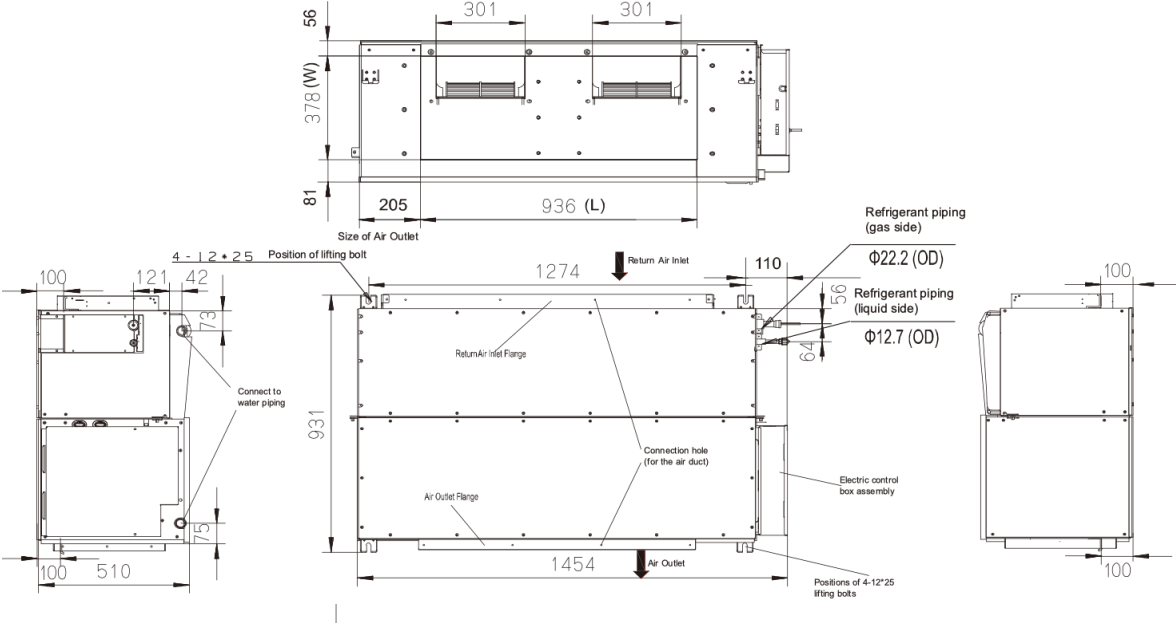
WIRING DIAGRAM



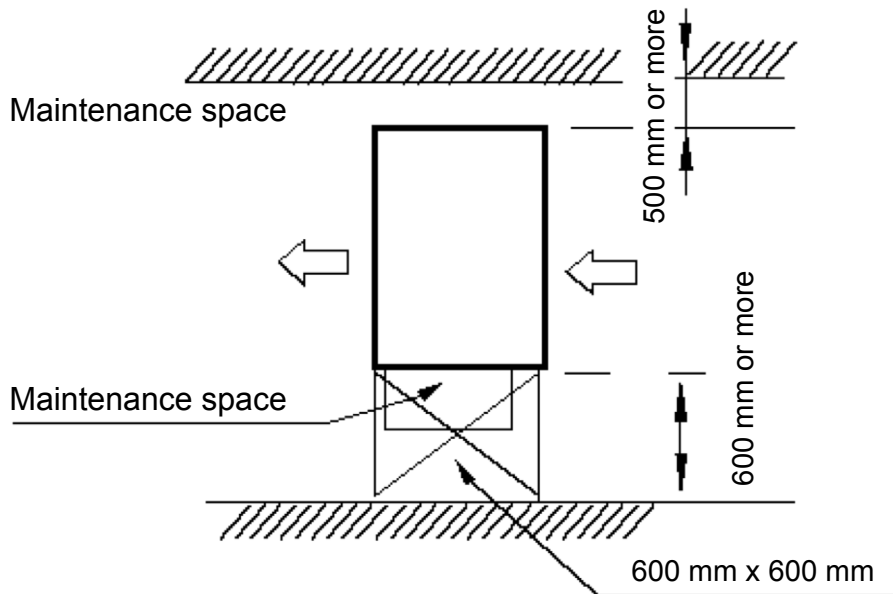
Power supply terminal

NOTES:
(1) The data and specifications present in this sheet may vary without notice.
(2) The images on this sheet are indicative and may be different from the final machine.

DIMENSIONS & WEIGHT

Model	KPDHF-200 DN4.0	KPDHF-250 DN4.0	KPDHF-280 DN4.0
	 <p>Technical drawings of the KPDHF-200 DN4.0 unit. The top view shows a rectangular unit with a total length of 936 mm (L) and a width of 378 mm (W). It features two 301 mm wide sections. The side view shows a height of 931 mm and a depth of 1454 mm. Key features include a Return Air Inlet at the top, an Air Outlet at the bottom, and an Electric control box assembly on the right. Refrigerant piping connections are shown with diameters of $\Phi 22.2$ (OD) for the gas side and $\Phi 12.7$ (OD) for the liquid side. A connection hole for the air duct is also indicated. Detail views show lifting bolt positions (4 - 12 x 25) and water piping connections.</p>		
Weight	130 kg	130 kg	130 kg

INSTALLATION




High Pressure Ducts

PRODUCT SHEET

KPDHF-400 DN4.0 / KPDHF-450 DN4.0 / KPDHF-560 DN4.0



KCT-03 SR
Recommended controller

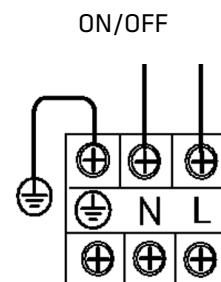
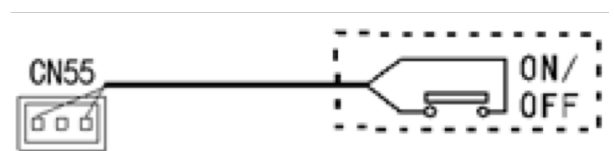
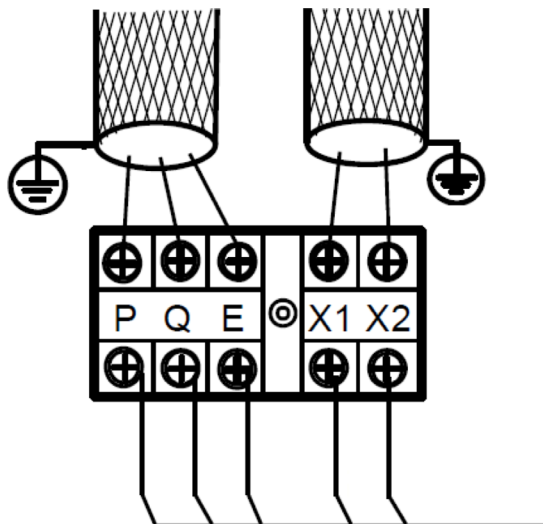
Product certified by: 



FEATURES

Model	KPDHF-400 DN4.0	KPDHF-450 DN4.0	KPDHF-560 DN4.0
Cooling capacity	40 kW	45 kW	56 kW
Heating capacity	45 kW	56 kW	63 kW
Power input	1.585 W	1.585 W	2.272 W
Airflow	4.400/4.750/5.100/5.450/ 5.800/6.150/6.500 m ³ /h	4.400/4.750/5.100/5.450/ 5.800/6.150/6.500 m ³ /h	5.000/5.400/5.800/6.200/ 6.600/7.000/7.400 m ³ /h
Max. static pressure	300 Pa	300 Pa	300 Pa
Sound pressure	49/51/53/54/55/56/57 dB(A)	49/51/53/54/55/56/57 dB(A)	51/53/55/56/57/58/59 dB(A)
Pipe diameter	Ø5/8" / Ø11/8"	Ø5/8" / Ø11/8"	Ø5/8" / Ø11/8"
Drain tube diameter	Ø32 mm	Ø32 mm	Ø32 mm
Power supply	220-240 V / 1 / 50 Hz	220-240 V / 1 / 50 Hz	220-240 V / 1 / 50 Hz
Max. input	30 A	30 A	30 A
Power wiring	(2+T)x2,50 mm ²	(2+T)x2,50 mm ²	(2+T)x2,50 mm ²
Shielded communication wiring	3x0,75 mm ²	3x0,75 mm ²	3x0,75 mm ²

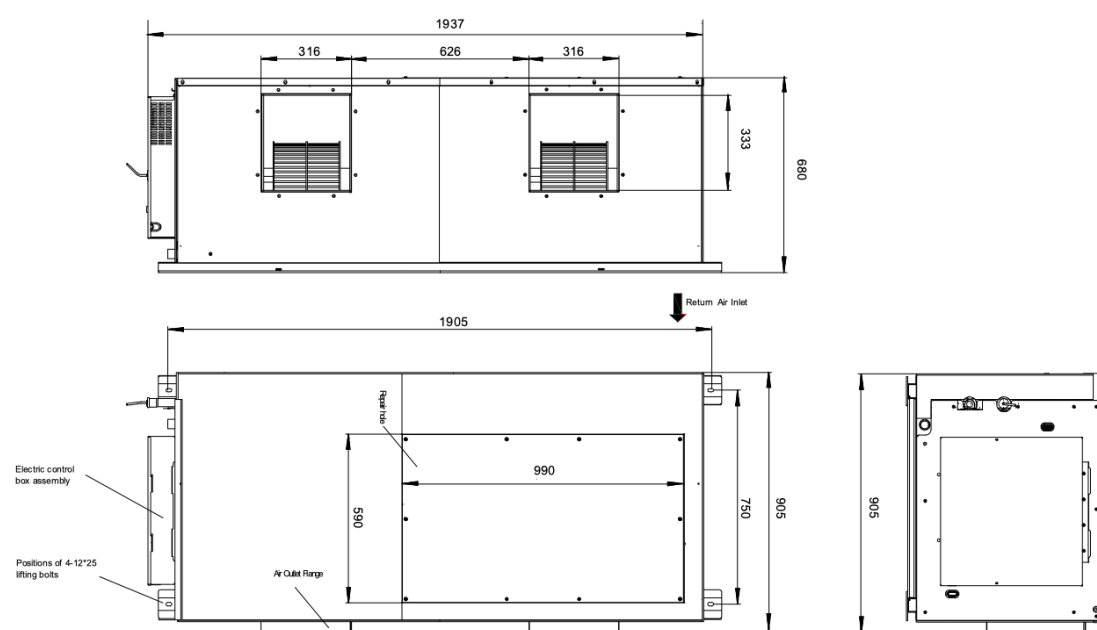
WIRING DIAGRAM



Power supply terminal

NOTES:
(1) The data and specifications present in this sheet may vary without notice.
(2) The images on this sheet are indicative and may be different from the final machine.

DIMENSIONS & WEIGHT

Model	KPDHF-400 DN4.0	KPDHF-450 DN4.0	KPDHF-560 DN4.0
	 <p>Technical drawings showing dimensions for the KPDHF units. The front view shows a total width of 1937 mm and a height of 680 mm. The side view shows a total width of 1905 mm and a height of 905 mm. The top view shows a width of 990 mm and a height of 750 mm. Labels include 'Return Air Inlet', 'Electric control box assembly', 'Positions of 4-12*25 lifting bolts', and 'Air Outlet Flange'.</p>		
Weight	210 kg	210 kg	218 kg

INSTALLATION

